

Pleiotrophin expression and role in physiological angiogenesis *in vivo* : potential involvement of nucleolin

Vascular Cell 4:4 | DOI: 10.1186/2045-824X-4-4 | © Li et al.; licensee Publiverse Online S.R.L. 2012

Received: 3 Dec 2011 | Accepted: 16 Dec 2012 | Published: 16 Dec 2012

Koutsioumpa Marina⁺, Drosou Georgia⁺, Mikelis Constantinos, Theochari Katerina, Vourtsis Dionussios, Katsoris Panagiotis, Giannopoulou Efstathia, Courty Jose, Petrou Christos, Magafa Vassiliki, Cordopatis Paul, Papadimitriou Evangelia[@]

⁺ Contributed equally[@] Corresponding author

Abstract

Background

Pleiotrophin (PTN) is a heparin-binding growth factor with significant role(s) in tumour growth and angiogenesis. Although implication of endogenous PTN has been studied in several *in vivo* models of tumour angiogenesis, its role in physiological angiogenesis has not been addressed. In the present work, we studied expression and functional significance of endogenous PTN during angiogenesis in the chicken embryo chorioallantoic membrane (CAM).

Methods

Using molecular, cellular and biochemical assays, we studied the expression pattern of PTN in CAM and human endothelial cells and its possible interaction with nucleolin (NCL). CAM cells were transfected with a pCDNA3.1 vector, empty (PC) or containing full length cDNA for PTN in antisense orientation (AS-PTN). Angiogenesis was estimated by measuring total vessel length. *In vitro*, human endothelial cells migration was studied by using a transwell assay, and down-regulation of NCL was performed by using a proper siRNA.

Results

Endogenous PTN mRNA and protein levels, as well as protein levels of its receptor protein tyrosine phosphatase beta/zeta (RPTPβ/ζ) were maximal at early stages, when CAM angiogenesis is active. Application of AS-PTN onto CAM at days of active angiogenesis was not toxic to the tissue and led to dose-dependent decreased expression of endogenous PTN, ERK1/2 activity and angiogenesis. Interestingly, endogenous PTN was also immunolocalized at the endothelial cell nucleus, possibly through interaction with NCL, a protein that has a significant role in the nuclear translocation of many proteins. Down-regulation of NCL by siRNA in human endothelial cells significantly decreased nuclear PTN, verifying this hypothesis. Moreover, it led to abolishment of PTN-induced endothelial cell migration, suggesting, for the first time, that PTN-NCL interaction has a functional significance.

Conclusions

Expression of endogenous PTN correlates with and seems to be involved in angiogenesis of the chicken embryo CAM. Our data suggest that NCL may have a role, increasing the number of growth factors whose angiogenic/tumorigenic activities are mediated by NCL.

Keywords

angiogenesis - endothelial cells - migration - nucleolin - pleiotrophin - receptor protein tyrosine phosphatase

Background

Pleiotrophin (PTN) is an 18 kDa secreted protein with high affinity for heparin. It is highly conserved among species and together with midkine, belongs to a family of heparin-binding growth factors with many similar biological activities. It was initially purified from bovine uterus and neonatal rat brain, and its expression has been detected increased in several developing tissues, such as the nervous system, deciduas basalis and mammary gland, bone and

cartilage, liver, kidney, lung, the epithelial ridge of the cochlea, retinas and corneas. Although its functional role has not been always elucidated, it displays important functions in growth and differentiation processes, such as neurite outgrowth and synaptic plasticity, fertility, development and regeneration of liver, auditory function, wound healing and adipogenesis. The best characterized functions of PTN up to date are those concerning its role(s) in the nervous system, as well as its involvement in tumour growth. The latter was initially supported by the fact that PTN has been detected in various human carcinomas, such as meningiomas, neuroblastomas, diffuse astrocytomas, glioblastomas, melanomas, multiple myeloma, prostate cancer, cancer of the pancreas, breast cancer, small cell lung cancer, malignant tumor of the testis, solid paediatric tumours, uterine cervical cancer and leiomyomas, while it has been also detected in serum of patients with breast, colon, pancreas, lung cancers and multiple myeloma. It is also constitutively expressed in cell lines derived from different types of tumours and is involved in tumour growth and metastasis in several experimental models. When PTN expression is up-regulated in normal cells the latter acquire a more malignant phenotype, while down-regulation of PTN expression decreases tumour cell proliferation and invasion *in vitro*, as well as tumour growth, metastases and angiogenesis *in vivo*, indicating a possible implication of PTN in the blood vessel network formation of solid tumours reviewed in [1, 2]. Besides a role in tumour angiogenesis, we have previously shown that exogenously administered PTN induces angiogenesis in several *in vitro* models of angiogenesis [3– 5] and *in vivo*, in the chicken embryo chorioallantoic membrane (CAM) [3]. Although the role of PTN has been studied in several *in vivo* models of tumour growth, there are no *in vivo* studies on the role of endogenous PTN in physiological angiogenesis.

PTN acts through several cell surface receptors, such as N-syndecan, anaplastic lymphoma kinase (ALK), receptor protein tyrosine phosphatase beta/zeta (RPTP β / ζ) and α ν β ζ integrin. Although ALK has been implicated in actions of PTN related to tumour growth, the best characterized receptor up to date, implicated in the tumour promoting activities of PTN is RPTP β / ζ reviewed in [1, 2]. We have previously shown that RPTP β / ζ is required for the stimulatory effects of PTN on human endothelial cell migration and tube formation on matrigel *in vitro* [4] but only when α ν β ζ integrin is also expressed [5]. Expression of integrin α ν β ζ is low in quiescent and high in angiogenic endothelial cells [6]; in CAM endothelial cells, α ν β ζ is expressed during the stages of new blood vessel formation [7]. Nucleolin (NCL) is also considered a low affinity receptor for PTN [8], although it has not been connected to any of PTN's biological activities. NCL is a multifunctional nucleolar protein that among other functions, acts as a shuttling protein between cytoplasm and nucleus [9]. NCL has been shown to import midkine into the nuclear fraction [10]. Based on the similarity of the two molecules, it has been hypothesized that NCL may also import PTN into the nuclear fraction [10], although this has never been shown up to date.

In the present study, we investigated the expression and the possible role of endogenous PTN and its receptors in the *in vivo* angiogenesis model of the chicken embryo CAM. Expression of endogenous PTN and its receptor RPTP β / ζ correlates with angiogenesis of the chicken embryo CAM. PTN seems to be involved in CAM angiogenesis and NCL may have a role in the angiogenic functions of PTN both *in vivo* and *in vitro*.

Methods

Antibodies, oligonucleotides, and reagents

Cell culture reagents were from BiochromKG (Seromed, Germany). Human recombinant PTN was from Peprotech Inc (Rocky Hill, NJ, USA) or was prepared as previously described [3]. Monoclonal antibody against NCL, affinity purified rabbit polyclonal antibody against PTN (used for immunoprecipitations and immunohistochemistry of CAM paraffin sections) and goat polyclonal antibody against RPTP β / ζ were from Santa Cruz Biotechnology Inc (Santa Cruz, CA, USA). Monoclonal antibody against PTN (used only in human cells) was from Abnova (Taipei City, Taiwan), goat polyclonal antibody against PTN was from R&D Systems (Minneapolis, MN, USA), antibody against phospho-ERK1/2 on Thr²⁰²-Tyr²⁰⁴ was from Cell Signalling (Danvers, MA, USA), antibody against ERK1/2 was from Upstate Biotechnology (Lake Placid, NY, USA), antibody against Prox-1 was from Axxora (San Diego, CA, USA), antibodies against β -actin and α ν β ζ were from Chemicon (Temecula, CA, USA) and monoclonal antibody against RPTP β / ζ was from BD Transduction Laboratories (San Diego, CA, USA). Protein A and G agarose beads were purchased from Merck (Whitehouse Station, NJ, USA). DNA oligonucleotide primers for chicken PTN and GAPDH and RNA oligonucleotide primers for NCL were obtained from VBC Biotech Services (Vienna, Austria). Double-stranded negative control siRNA was obtained from Ambion (Austin, TX, USA) and the transfection reagents Jet-PEI and JetSI-ENDO were from Polyplus Transfection (Illkirch, France). Alexa secondary antibodies were from Molecular Probes (Carlsbad, CA, USA). Rabbit polyclonal antibody against NCL (used only in immunofluorescent studies), human IgG and all secondary horseradish peroxidase-conjugated antibodies were purchased from Sigma (St. Louis, MO, USA). Draq5 was from Biostatus Limited (Leicestershire, United Kingdom). The 9-fluorenylmethoxycarbonyl (Fmoc)-protected amino acids, Wang resin and peptide reagents were purchased from CBL (Patras, Greece), Bachem (Bubendorf, Switzerland) and Novabiochem (Läufelfingen, Switzerland). All other reagents, unless mentioned below, were purchased from Sigma or Applichem (Darmstadt, Germany).

CAM assay

The *in vivo* chicken embryo CAM angiogenesis assay was used, as previously described [3]. Leghorn fertilized eggs (Pindos, Ioannina, Greece) were incubated for 4 days at 37°C, when a window was opened on the egg shell, exposing the chorioallantoic membrane. The window was covered with tape and the eggs were returned to the incubator.

Different amounts of pCDNA3.1 alone or pCDNA3.1 carrying full length cDNA for PTN in antisense orientation (AS-PTN) [11], were diluted in a final volume of 50 μ l of phosphate buffered saline pH 7.4 (PBS) containing jet-PEI (N/P = 5 ratio) and were applied at the 9th day of embryo development on an area of 1 cm² of the CAM, restricted by a plastic ring. Forty eight hours after treatment and subsequent incubation at 37°C, CAMs were fixed in situ, excised from the eggs, placed on slides and left to air-dry. Pictures were taken through a stereoscope equipped with a digital camera and the total length of the vessels was measured, as previously described [3]. Assays were carried out three times and each experiment contained 10-20 eggs per data point.

For the biochemical studies, plasmids were applied on the CAM as described above, and after 24 h of incubation at 37°C, the CAMs were excised from the eggs, cut in pieces, washed three times in PBS and stored at -80°C until used [12]. Assays were carried out three times and each experiment contained 5-10 eggs per data point.

Haematoxylin-eosin staining and immunohistochemistry of CAM paraffin sections

Tissues from various developmental stages were excised from the eggs, washed in PBS, fixed in saline-buffered formalin and embedded in paraffin. Sections were cut at 5 μ m thickness and placed on positively charged glass slides. After rehydration, the tissue sections were stained with standard haematoxylin-eosin staining or processed for immunohistochemistry. In the latter case, endogenous peroxidase was blocked with 3% H₂O₂ for 30 min in a dark chamber at room temperature. Tissue sections were then incubated with blocking agent (Kwik Kits, Immunon Immunohistochemicals, Lipshaw, USA) for 15 min at room temperature to prevent non specific binding of antibodies, followed by incubation with 5 μ g/ml of affinity purified rabbit anti-PTN IgG in Tris-buffered saline (TBS), pH 7.4, with 0.05% Tween (TBS-T) containing 2% bovine serum albumin (BSA) for 1 h at 37°C. After 3 washes of 2 min each in TBS-T, a second 30 min incubation at room temperature, using a horseradish peroxidase conjugated goat anti-rabbit IgG was performed at a dilution of 1:5,000 in TBS-T containing 2% BSA. After three washes of 2 min each in TBS, detection of PTN was performed by DAB staining. Sections were mounted in mounting fluid, viewed in a Zeiss microscope and photographed using a digital camera [12].

Cell culture

Human umbilical vein endothelial cells (HUVEC) used in the present study were isolated from human umbilical cords and cultured as previously described [3]. HUVEC were grown as monolayers in medium M199 that was supplemented with 15% fetal bovine serum (FBS), 150 μ g/ml endothelial cell growth supplement, 5 U/ml heparin sodium, 100 U/ml penicillin, 100 μ g/ml streptomycin, 50 μ g/ml gentamycin and 2.5 μ g/ml amphotericin B and used at passages 2-3. U87MG cells (ATCC) were grown routinely in Dulbecco's modified Eagle medium (DMEM)/Ham's F12 medium supplemented with 10% FBS, 100 IU/ml penicillin, 100 μ g/ml streptomycin, 50 μ g/ml gentamycin, and 2.5 μ g/ml amphotericin B. Cultures were maintained at 37°C, 5% CO₂, and 100% humidity. When cells reached 70-80% confluence, they were lysed for immunoprecipitation experiments or fixed for immunofluorescent studies.

Migration assay

Migration assays were performed as described previously [3, 5] in 24-well microchemotaxis chambers (Corning, Inc., Lowell, MA, USA) using uncoated polycarbonate membranes with 8- μ m pores. Serum-starved cells were harvested and resuspended at a concentration of 10⁵ cells/0.1 ml in serum-free medium containing 0.25% BSA. The bottom chamber was filled with 0.6 ml of serum-free medium containing 0.25% BSA and the tested substances. The upper chamber was loaded with 0.1 ml of serum-free medium containing 10⁵ cells and incubated for 4 h at 37°C. After completion of the incubation, the filters were fixed and stained with 0.33% toluidine blue solution. The cells that migrated through the filter were quantified by counting the entire area of each filter, using a grid and an Optech microscope at X20 (Optech Microscope Services Ltd., Thame, UK).

Western blot analysis

CAMs from various developmental stages or after treatment with the plasmids were homogenized using a glass-glass homogenizer in 20 mM Hepes, pH 7.4, containing 2 M NaCl supplemented with 1 mM phenylmethylsulfonyl fluoride (PMSF), 5 mM EDTA and 1 μ g/ml aprotinin. The homogenate was centrifuged at 10,000 x g for 20 min at 4°C. Equal amounts (100 μ g) of total protein from CAM lysates or the immunoprecipitated samples, as described below, were analysed by SDS-PAGE and transferred to Immobilon P membranes. Blocking was performed by incubating the membranes with TBS-T containing 3% BSA in the case of PTN, RPTP β/ζ , PROX-1, phosphorylated ERK1/2 (pERK1/2) and total ERK1/2 (tERK1/2) and 5% non-fat dry milk in the case of NCL and actin. Membranes were incubated with primary antibodies for 16 h at 4°C under continuous agitation, washed 3 times with TBS-T, and incubated with secondary antibodies for 1 h at room temperature. Membranes were finally washed and detection of immunoreactive bands was performed using the ECL detection kit (Pierce), according to the manufacturer's instructions. Blots for PTN, NCL and PROX-1, where appropriate, were stripped and subjected to subsequent Western blotting for actin. Blots for pERK1/2 were stripped and subjected to subsequent Western blotting for total ERK1/2. The protein amounts that corresponded to each immunoreactive band were quantified from digital images of gels, using the ImagePC image analysis software (Scion Corporation, Frederick, MD) [5, 12].

Immunoprecipitation assays

CAMs or cells were homogenised or lysed, respectively, in PBS containing 1% Triton X-100, 0.1% SDS, 20 nM sodium orthovanadate, 1 µg/ml aprotinin, 1 mM phenylmethylsulfonyl fluoride and 5 mM EDTA. Homogenates or lysates were centrifuged at 20,000 g for 30 min at 4°C. Three mg of total protein were transferred to new eppendorf tubes and incubated with primary antibodies for 16 h at 4°C under continuous agitation. Protein A- and protein G-agarose beads were added and samples were further incubated for 2 h at 4°C. Beads and bound proteins were collected by centrifugation and washed twice with ice-cold PBS [5]. The pellet was resuspended in 50 µl SDS loading buffer, heated to 95-100°C for 5 min, centrifuged and analyzed by Western blot analysis as described above.

Reverse transcriptase-polymerase chain reaction (RT-PCR) for PTN

Total RNA was extracted from CAMs of various developmental stages using the Nucleospin RNA II kit (Macherey-Nagel, Germany), according to the manufacturer's instructions. Primers used for the detection of PTN mRNA were designed according to the chicken sequence (Accession number BI394859) and were: 5'-AGA GAA ACC AGA GAA AAA GG-3' (sense) and 5'-CAG TCA GCA TTA TGA AGA GC-3' (antisense), yielding a product of 288 bp. The reporter gene was the chicken glyceraldehyde-3-phosphate dehydrogenase (GAPDH) and the primers used were: 5'-ACG GAT TTG GCC GTA TTG GC-3' (sense) and 5'-GCA GGA TGC GAA ACT GAG CG-3' (antisense) [13]. The RT-PCR reactions for PTN and GAPDH were performed in a single step, using the Access RT-PCR system (Promega) under the following conditions: The reverse transcriptase reaction was performed by AMV-RT for 1 h at 48°C. After an initial denaturation step for 2 min at 94°C, 30 cycles of amplification (94°C for 1 min, 57°C for 40 sec and 68°C for 1.5 min for GAPDH and 94°C for 1 min, 55°C for 40 sec and 68°C for 1.5 min for PTN) were performed and ended with a final DNA synthesis step at 68°C for 7 min. In all cases, PCRs were not in the saturating phase (data not shown). DNA contamination was excluded by performing PCR reactions in the absence of the reverse transcription step. The RT-PCR products were subjected to electrophoresis on 2% agarose gels containing 0.5 µg/ml ethidium bromide and photographed using a digital camera. The bands were quantified (area and intensity) using Image PC image analysis software and the ratios PTN/GAPDH of electrophoretic band values represent the relative expression of *ptn* gene at different days of embryo development.

RNA interference

The short interfering RNA against NCL was sense: 5'-GGAAGGUCAGCAGUCUCCAUGAGA-3' and antisense: 5'-UCUCAUGGAAGACUGCUGACCUUCC-3' [14]. HUVEC were grown to a confluence of 50% in medium without antibiotics. Transfection was performed in serum-containing medium for 4 h using annealed RNA for NCL at the concentration of 50 nM and jetSI-ENDO as transfection reagent. Cells were incubated for another 24 h in serum-containing medium and lysed in order to evaluate transfection efficiency by Western blot analysis, or fixed for immunofluorescent studies. Double-stranded negative control siRNA from Ambion (catalogue # AM4635) was used in all assays.

Immunofluorescence

For immunofluorescent studies, cells were fixed by 4% paraformaldehyde for 10 min. After being washed 3 times with PBS, the cells were blocked with PBS containing 3% BSA and 10% FBS for 1 h at room temperature. The cells were stained with primary antibodies against NCL (1:1,000) and PTN (1:500). Nuclei were stained with Draq5 (final concentration 3.3 µM). Fluorescent secondary antibodies were used at the concentration of 1:500, and the cells were mounted with Mowiol 4-88 (Calbiochem, San Diego, CA, USA) and visualized at 21°C with Leica SP5 (X63 objective with a numerical aperture of 1.4; Leica Microsystems, Wetzlar, Germany) confocal microscope.

Subcellular fractionation

Subcellular fractions of U87MG cells comprising cytosolic, nuclear and cell membrane extracts were prepared as follows [15]: Cell monolayers in 100-mm plates were washed extensively with PBS before being scraped and pelleted. Washed cells (30×10^9) were then disrupted in a hypotonic solution (10 mM Hepes, pH 6.9, 10 mM KCl, 2 mM MgCl₂, 1000 units/ml aprotinin, 0.1 mM PMSF) on ice. Nuclei were pelleted at 400 g for 5 min and washed twice in PBS before extraction in the lysis buffer (10 mM Tris-HCl, pH 7.6, 400 mM NaCl, 1 mM EDTA, 1000 units/ml aprotinin, 0.1 mM PMSF, and 1% Triton X-100). The lysate was centrifuged at 12,000 g for 10 min and the supernatant was referred to as the nuclear fraction. The supernatant obtained after pelleting intact nuclei was further centrifuged at 14,000 g for 30 min and the supernatant corresponding to the cytosolic fraction was recovered, while the pellet was resuspended in lysis buffer containing 150 mM instead of 400 mM NaCl. This latter suspension was centrifuged at 14,000 g for 30 min to separate the cytoskeletal (the pellet) and membrane (supernatant) fractions. Equivalent total protein amounts of each fraction corresponding to nuclei, cytosol, and membrane were immunoprecipitated for PTN and then analyzed by Western blot analysis for PTN or NCL.

Synthesis of the 5(KPR)TASP peptide

5(KPR) TASP peptide, a potent and selective ligand of cell surface nucleolin, was synthesized by the solid phase method using protected Fmoc amino acids and Wang resin as the solid support [16]. In summary, Fmoc-protected amino acids were used with the t-Butyl group as side-chain protecting group for Glu, tert-butuloxycarbony group (t-Boc) and/or 4-methoxytrityl group for Lys, t-Boc group for Trp, trityl group for Cys and 2,2,4,6,7-pentamethyldihydrobenzofuran-5-sulfonyl group for Arg. Stepwise synthesis of the TASP core peptide was achieved

using diisopropylcarbodiimide/1-hydroxybenzotriazole as coupling reagents. The KPR tripeptide was step by step synthesized on ϵ -aminogroup of the lysine residues in positions 1,3,6,8 as well on the aminoterminal of the TASP core using HATU/DIPEA in dimethylformamide as coupling agents. After completion of the synthesis, the resin was treated with a trifluoroacetic acid solution (TFA/1,2-ethanedithiol/triethylsilane/water/anisole, 95/1/1/1/2 v/v/v/v/v) in the presence of scavengers to liberate the fully deprotected crude peptide. The released peptide was precipitated upon solvent concentration and addition of cold ether and the final product was purified by gel filtration chromatography on Sephadex G-15 using 20% acetic acid as the eluent. Final purification was achieved by preparative high performance liquid chromatography. The final 5(KPR)TASP peptide was checked for its purity by analytical HPLC on a Lichrosorb RP18 column (C18 solid phase, 7 μ m particle size, 250 mm \times 8 mm) applying a linear gradient 10%-70% acetonitrile (0.1% TFA) for 35 minutes, and 70%- 100% acetonitrile (0.1% TFA) for 5 minutes (flow rate 1.5 mL/min, UV detection at 220 nm and 254 nm). The final verification of the peptide sequence was achieved by Electron Spray Ionization-Mass Spectrometry.

Statistical analysis

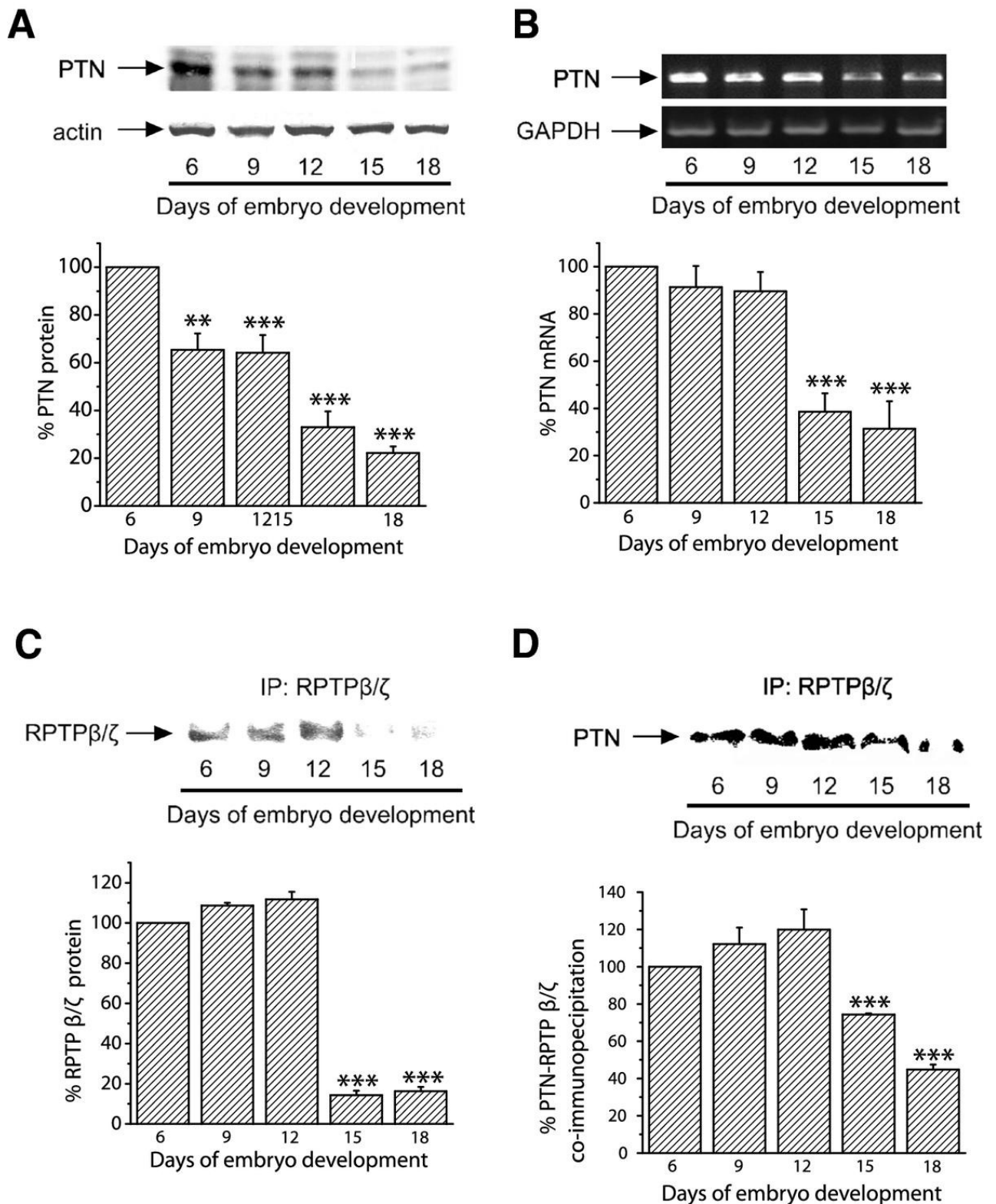
The significance of variability between the results from various groups was determined by one way ANOVA. Each experiment included triplicate measurements for each condition tested, unless otherwise indicated. All results are expressed as mean \pm S.E.M. from at least three independent experiments.

Results

PTN is expressed by chicken embryo CAM cells and interacts with RPTP β / ζ

Initially, we investigated whether PTN is physiologically expressed by CAM cells. In order to do this, we performed Western blot and RT-PCR analyses to detect PTN at several stages of embryo development. Equal amounts of total CAM proteins from tissues of different developmental stages were analyzed by 17.5% SDS-PAGE. Western blot analysis showed that PTN protein was present in the chicken embryo CAM at all embryonic developmental stages, its amounts were maximal at day 6 of embryo development and declined progressively until day 18 (Figure 1A). Using semi-quantitative RT-PCR, it was found that PTN mRNA levels were also maximal at day 6 of embryo development, remained at high levels till day 12 and were decreased at later developmental stages (Figure 1B). RPTP β / ζ protein was also present in the chicken embryo CAM at all embryonic developmental stages, its amounts were maximal at days 6-12 of embryo development and declined progressively until day 18 (Figure 1C). We could not detect RPTP β / ζ at the mRNA level since the chicken gene is not known and the human primers tested did not form any product. PTN and RPTP β / ζ co-immunoprecipitated from CAM protein extracts and this interaction was also maximal at days 6-12 of embryo development (Figure 1D). Interestingly, integrin α _v β ₃ also interacts with RPTP β / ζ when there is active angiogenesis, while this interaction is decreased when angiogenesis of the tissue has stopped (Additional file 1).

Figure 1

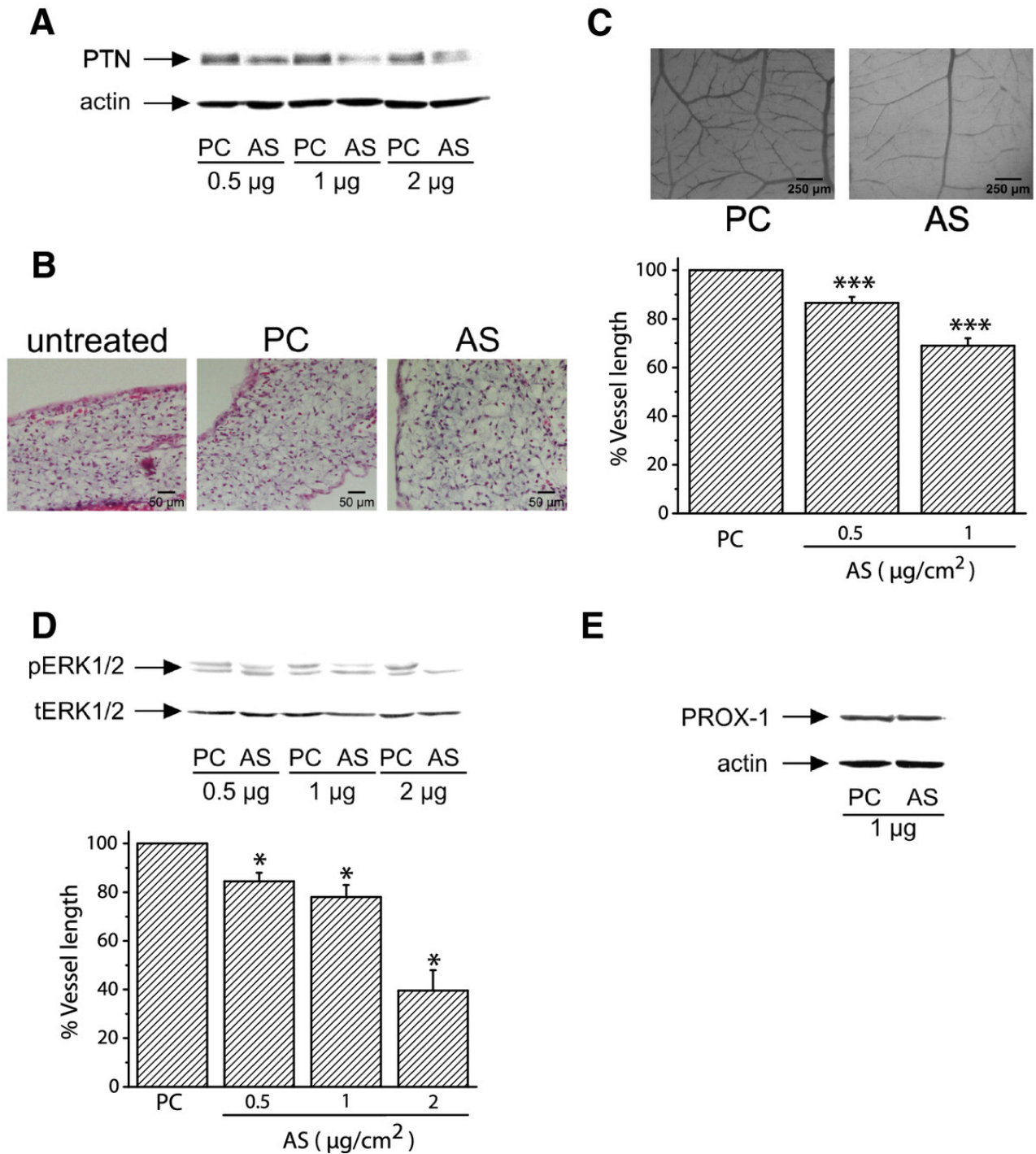


Detection of endogenous PTN and RPTPβ/ζ in the chicken embryo CAM. A. Equal amounts of protein extracts of chicken embryo CAM from different developmental stages were analyzed by SDS-PAGE, followed by Western blot analysis for PTN and actin. The protein amounts were quantified by densitometric analysis of the corresponding bands and the ratio PTN/actin was calculated for each lane. B. Products of RT-PCR reactions for chicken PTN and GAPDH from mRNA of chicken embryo CAM from different developmental stages. The mRNA amounts were quantified by densitometric analysis of the corresponding bands and the ratio PTN/GAPDH was calculated in each lane. Results in both A and B are expressed as mean ± S.E.M. of the % change of the PTN relative amounts compared to day 6. C. Three mg of total protein from chicken embryo CAM extracts from different developmental stages were subjected to immunoprecipitation for RPTPβ/ζ. Precipitated proteins were analyzed by SDS-PAGE, followed by Western blot for the presence of RPTPβ/ζ. D. Three mg of total protein from chicken embryo CAM extracts from different developmental stages were subjected to immunoprecipitation for RPTPβ/ζ. Precipitated proteins were analyzed by SDS-PAGE, followed by Western blot analysis for the presence of PTN. The protein amounts in C and D were quantified by densitometric analysis of the corresponding bands and results are expressed as mean ± S.E.M. of the % change compared to day 6. Asterisks in all cases denote a statistically significant difference from day 6. **P < 0.01, ***P < 0.001.

Decrease of endogenous PTN expression results in decreased angiogenesis in the chicken embryo CAM

Since PTN expression correlates with blood vessel formation in the CAM, we studied if down-regulation of its expression would decrease angiogenesis of the tissue. AS-PTN or empty pCDNA3.1 vectors were applied on the CAM at day 9 of embryo development, as described in Methods. As shown in Figure 2A, application of AS-PTN onto CAM led to decreased amounts of endogenous PTN in a dose-dependent manner, suggesting that expression of PTN was significantly affected by this treatment, without being toxic to the tissue as evidenced by haematoxylin-eosin staining of CAM paraffin sections (Figure 2B). Decreased expression of endogenous PTN by CAM cells correlated with a dose-dependent decrease in tissue angiogenesis (Figure 2C) and ERK1/2 activity (Figure 2D). In contrast, it did not affect the expression of the lymphatic endothelial cells' marker PROX-1 (Figure 2E). Similarly to CAM angiogenesis, PROX-1 expression is increased till day 12 of embryo development and significantly decreased at later developmental stages (Additional file 2).

Figure 2



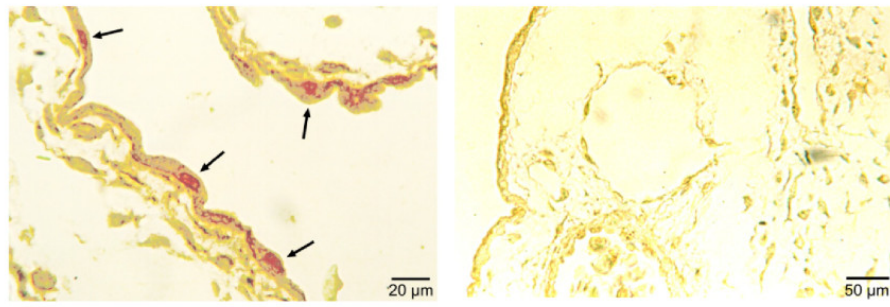
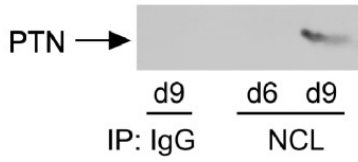
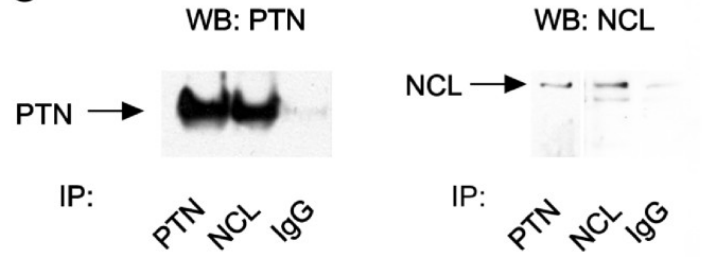
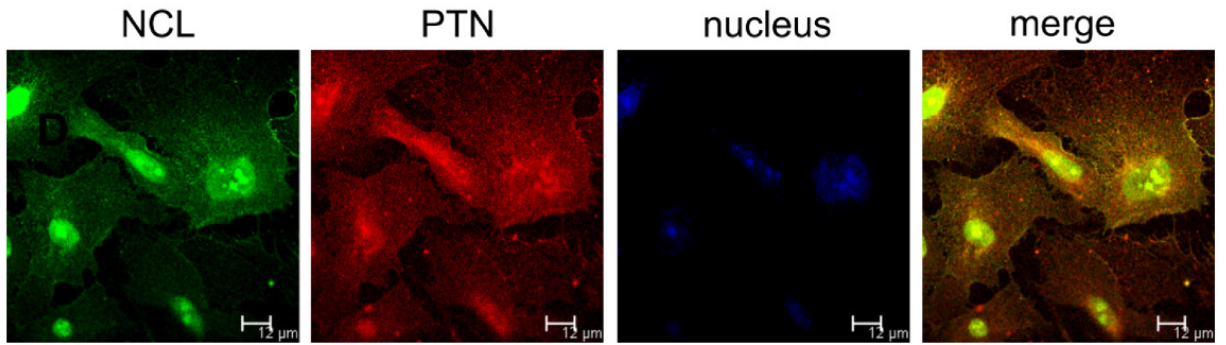
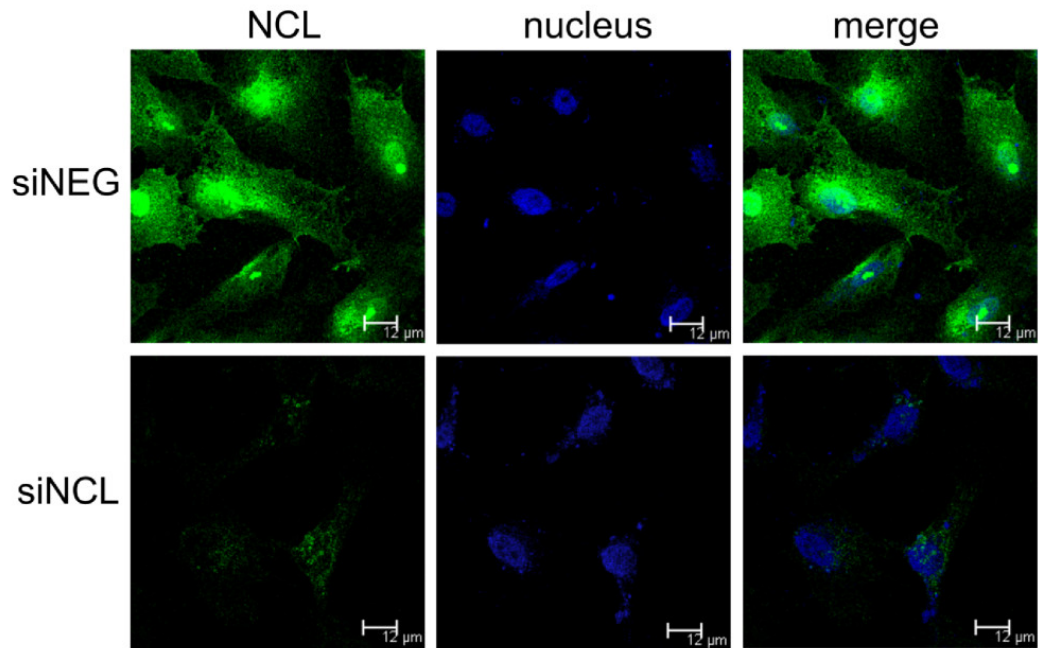
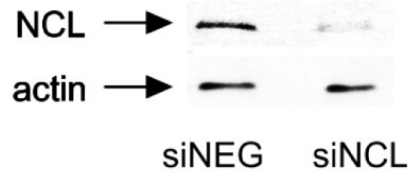
Decreased expression of endogenous PTN following transfection of CAM cells with pCDNA3.1 carrying AS-PTN results in decreased angiogenesis. A. Equal amounts of protein extracts of chicken embryo CAM 24 h after application of pCDNA3.1 alone (PC) or carrying AS-PTN (AS) were analyzed by SDS-PAGE, followed by Western blot analysis for PTN and actin. B. Haematoxylin & eosin staining of CAM paraffin sections 24 h after application

of 1 μg of pCDNA3.1 alone (PC) or carrying AS-PTN (AS). Untreated CAM paraffin sections at the same developmental stage were used as control. C. Different amounts of pCDNA3.1 alone or carrying AS-PTN were applied on the CAM and 48 h later the number of vessels was estimated using image analysis software. Results are expressed as mean \pm S.E.M. of the % change of the total vessel length in treated with pCDNA3.1 carrying AS-PTN (AS) compared with the tissue treated with pCDNA3.1 vector alone (PC) at the same quantity (control). Asterisks denote a statistically significant difference (unpaired *t*-test) from the control. *** $P < 0.001$. The pictures are representative, showing the vessel network of the chicken embryo CAM after treatment with 1 μg pCDNA3.1 alone (PC) or carrying AS-PTN (AS). D. Representative pictures of Western blot analyses from three independent experiments for phosphorylated ERK1/2 (pERK1/2) and total ERK1/2 (tERK1/2) in protein extracts of chicken embryo CAM 24 h after application of pCDNA3.1 alone (PC) or carrying AS-PTN (AS). Phospho- and total protein amounts were quantified by densitometric analysis of the corresponding band in each lane, and the ratio pERK1/2/tERK1/2 was calculated in each lane. Results are mean \pm S.E.M. of the % change of ERK1/2 phosphorylation in treated with pCDNA3.1 carrying AS-PTN (AS) compared with the tissue treated with pCDNA3.1 vector alone (PC) at the same quantity (control). Asterisks denote a statistically significant difference (unpaired *t*-test) from the control. * $P < 0.05$. E. Representative pictures of Western blot analyses from three independent experiments for PROX-1 and actin in protein extracts of chicken embryo CAM 24 h after application of pCDNA3.1 alone (PC) or carrying AS-PTN (AS).

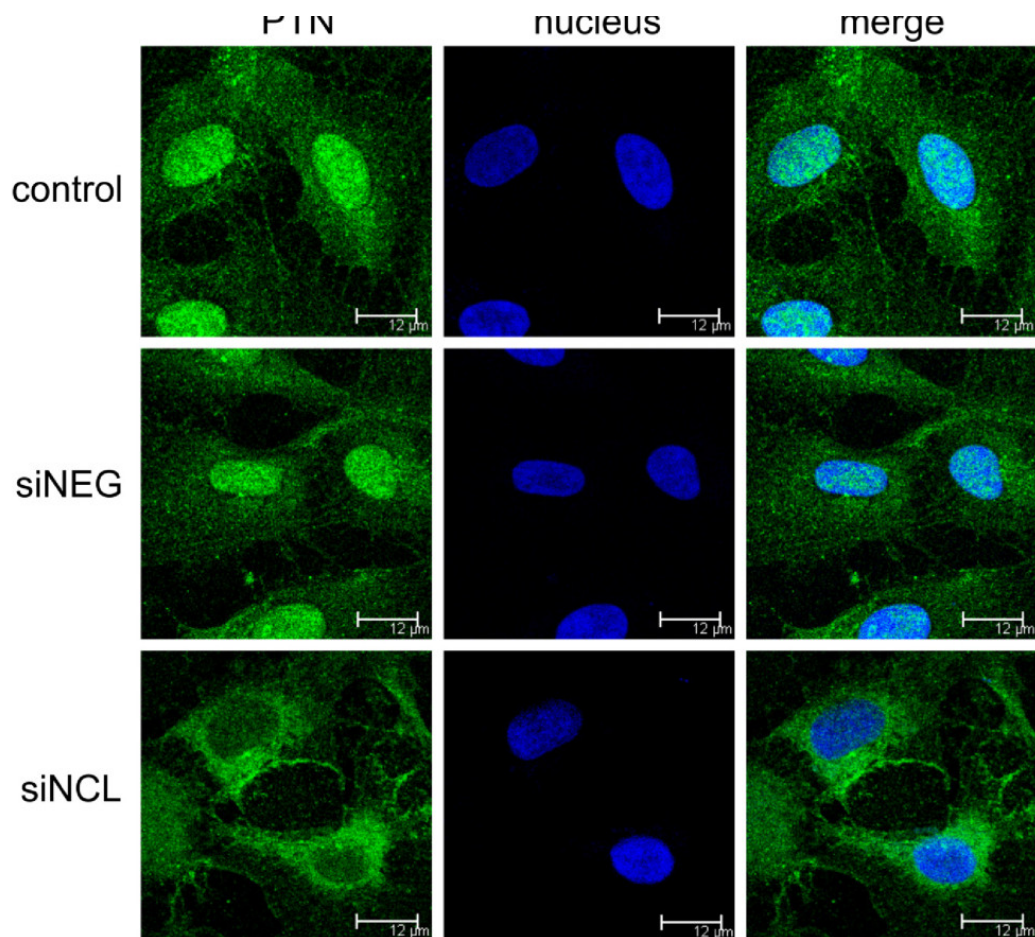
PTN directly interacts with NCL in CAM and human endothelial cells

By using immunohistochemistry in CAM paraffin sections we found that endothelial cells were positive for PTN; it is noteworthy that PTN immunoreactivity was also detected in the nucleus of CAM endothelial cells (Figure 3A). Based on this observation, we studied whether PTN interacts with NCL, a protein that participates in the transport between cytoplasm and nucleus of several molecules [17– 19], among which midkine [10]. By immunoprecipitating CAM proteins against NCL and analyzing immunoprecipitates for the presence of PTN, we found that PTN co-immunoprecipitated with NCL (Figure 3B). We verified PTN nuclear localization, as well as PTN-NCL interaction in HUVEC, by a combination of immunoprecipitation, Western blot and immunofluorescent analyses. PTN was co-immunoprecipitated with NCL in HUVEC lysates (Figure 3C) and co-localized with NCL in the nucleus, cytoplasm and cell membrane of HUVEC (Figure 3D). By performing subcellular fractionation assay, similar pattern of co-localization of PTN with NCL was also observed in U87MG cancer cells (Additional file 3), suggesting that the interaction between PTN and NCL is common to several types of cells. In order to investigate whether NCL is playing a role in the nuclear localization of PTN, we down-regulated NCL expression in HUVEC by siRNA (Figure 3E), and examined the subcellular localization of PTN by immunofluorescence microscopy. As shown in Figure 3F, when NCL expression was down-regulated, PTN localization in the nucleus was significantly decreased.

Figure 3

A**B****C****D****E****F**

PTN nucleus merge

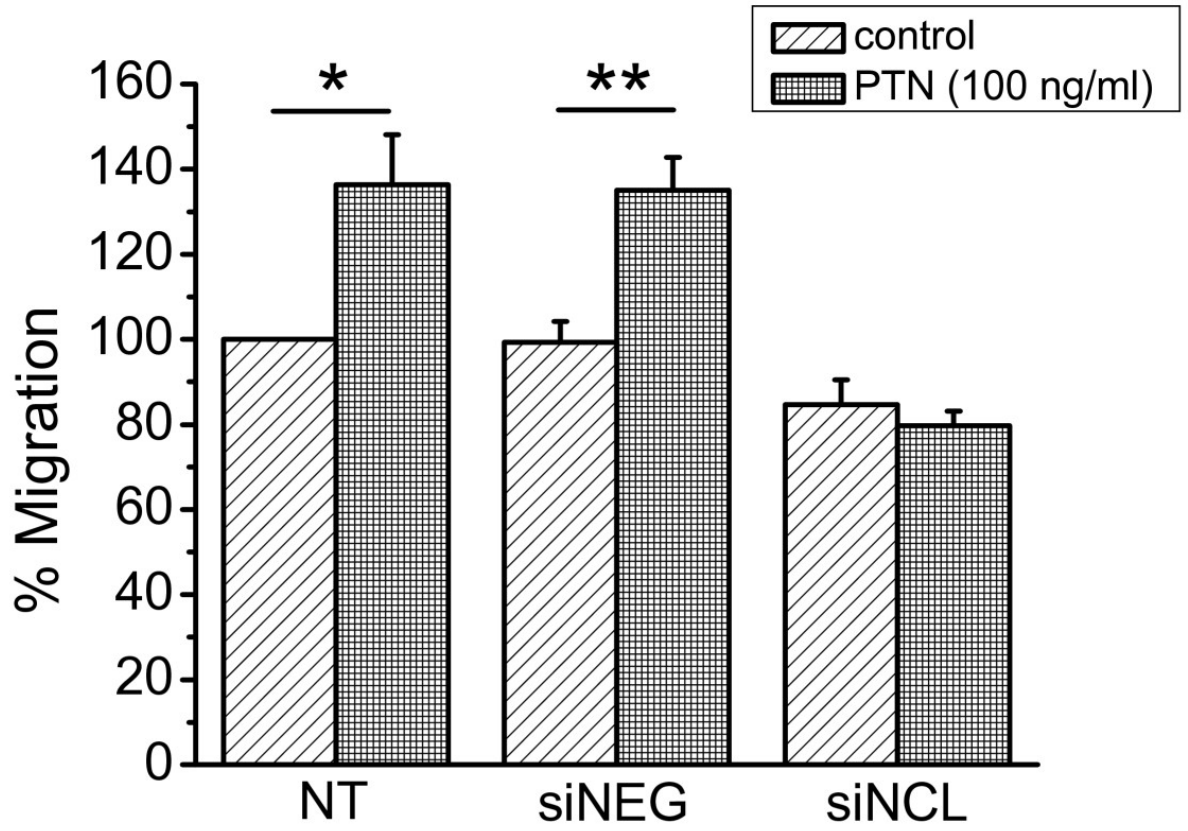
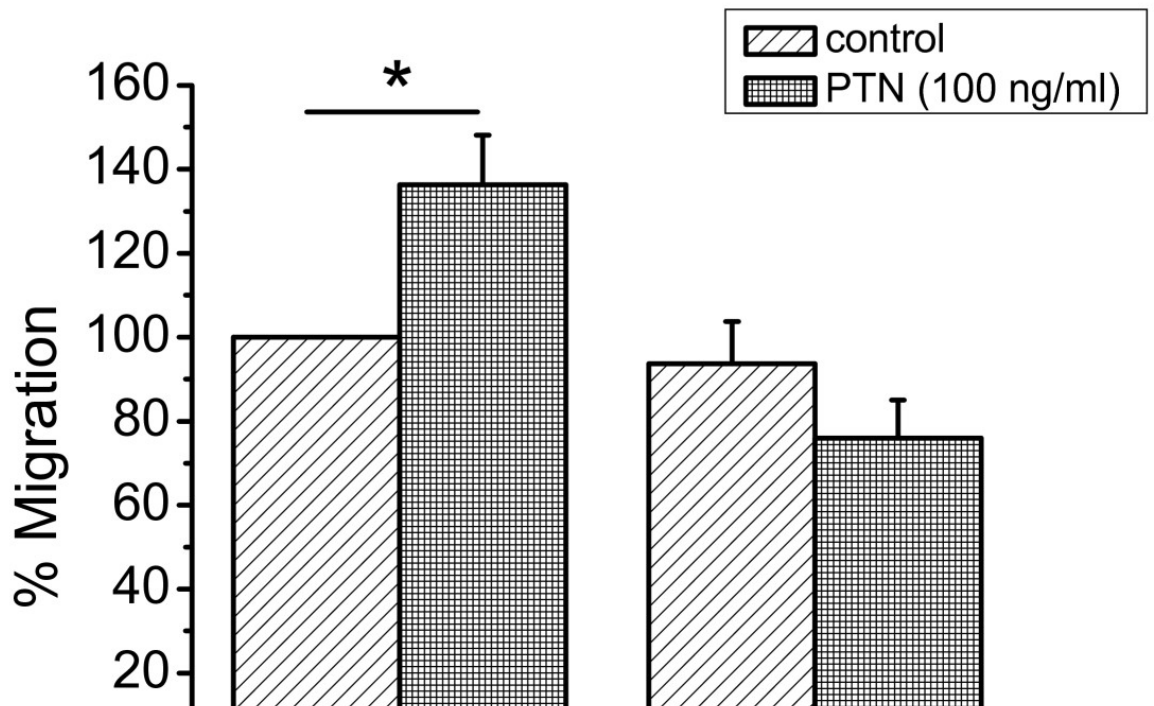


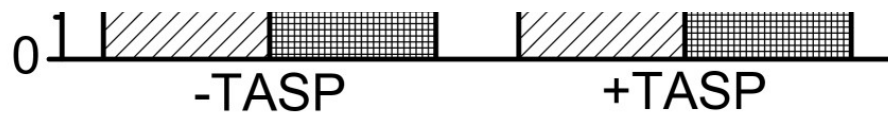
NCL is playing a role in the nuclear translocation of PTN. A. Cellular localization of PTN protein in paraffin sections of chicken embryo CAM at day 9 of embryo development. Arrows on the left picture indicate an intense PTN immunoreactivity in the nucleus of endothelial cells (40× magnification). The picture on the right shows a CAM paraffin section treated only with the secondary antibody (20× magnification). B. Equal amounts of protein extracts of chicken embryo CAM from days 6 (d6) and 9 (d9) of embryo development were subjected to immunoprecipitation for IgG or NCL. The precipitated proteins were analyzed by Western blot for the presence of PTN. C. Equal amounts of protein extracts of HUVEC were subjected to immunoprecipitation for IgG, PTN or NCL. The precipitated proteins were analyzed by SDS-PAGE, followed by Western blot analysis for the presence of NCL or PTN respectively. D. Representative immunofluorescent images of HUVEC stained for PTN (red), NCL (green) and nucleus (blue). E. HUVEC lysates or fixed cells after treatment for 24 h with siRNA for NCL were analyzed for the presence of NCL, by Western blot or immunofluorescence respectively. F. Representative immunofluorescent images of HUVEC stained for PTN (green) and nucleus (blue) after down-regulation of NCL expression by siRNA. siNEG, cells transfected with a negative control siRNA; siNCL, cells transfected with siRNA for NCL.

Down-regulation of NCL abolishes PTN-induced migration of human endothelial cells

In order to determine whether NCL is involved in PTN-induced endothelial cell migration, we studied PTN-induced migration of HUVEC after down-regulation of NCL expression by siRNA. As shown in Figure 4A, down-regulation of NCL expression resulted in complete inhibition of PTN-induced endothelial cell migration. We furthermore studied PTN-induced migration of HUVEC in the presence of the 5(KPR)TASP pseudopeptide that is known to bind the C-terminal RGG domain of cell-surface expressed NCL and block its function [16]. 5(KPR)TASP pseudopeptide completely abolished PTN-induced HUVEC migration (Figure 4B), further suggesting involvement of NCL in the angiogenic functions of PTN. The concentration of PTN used in all *in vitro* assays was 100 ng/ml, which causes a maximal effect on endothelial cell migration [4].

Figure 4

A**B**



NCL plays a role in PTN-induced endothelial cell migration. A. Down-regulation of NCL expression by siRNA completely abolished PTN-induced HUVEC migration. B. Blockage of cell surface NCL by its ligand 5(KPR)/TASP (TASP, 1 μ M) completely abolished PTN-induced HUVEC migration. Results are expressed as percent of the values obtained in untreated cells (control). Data are the mean \pm S.E.M. of three independent experiments. Asterisks denote a statistically significant difference from control. * $P < 0.05$, ** $P < 0.01$. NT, non transfected cells; siNEG, cells transfected with a negative control siRNA; siNCL, cells transfected with siRNA for NCL.

Discussion

PTN is expressed in a variety of primary human tumours and has been correlated with enhanced tumour growth and vascular density reviewed in [2]. We have previously shown that exogenously administered human recombinant PTN is angiogenic in several *in vitro* models and in the chicken embryo CAM model *in vivo* [3]. In the present study we show that endogenous PTN is playing a significant role in the vascularisation of the chicken embryo CAM. This is supported by our findings that: a) Expression of endogenous PTN is maximal at early developmental stages, when there is active endothelial cell proliferation, migration and angiogenesis, and is decreased later, when there is no endothelial cell proliferation and migration [20], and b) decreased expression of endogenous PTN resulted in decreased angiogenesis of the tissue, directly linking PTN expression with new blood vessel formation. In favour of a stimulatory effect of PTN on *in vivo* angiogenesis are also our additional data showing that exogenously added PTN onto the chicken embryo CAM increases the mRNA levels of vascular endothelial growth factor (VEGF) isoforms 165 and 190, as well as activates metalloproteinase 2 (Additional file 4). These data are in line with a recent work showing that PTN promotes VEGF expression and cooperates with VEGF in promoting colorectal cancer angiogenesis [21]. Interestingly, although PTN seems to affect the number of angiogenic blood vessels, it did not affect lymphatic endothelial cells' marker PROX-1 expression, suggesting that PTN does not affect lymphatic vessel density, in line with data on colorectal cancer showing that lymphatic microvessel density does not correlate with PTN expression [21].

The mechanisms involved in the angiogenic action of PTN *in vivo* are not completely clear. We have previously shown that RPTP β/ζ is responsible for PTN-induced endothelial cell migration [4]. In the chicken embryo CAM, we have detected RPTP β/ζ at the protein level and found that it interacts with PTN and its expression is maximal at the early developmental stages, similarly to the expression of PTN. Besides RPTP β/ζ , $\alpha_v\beta_3$ integrin seems to be critical for the stimulatory effect of PTN on endothelial cell migration, by forming a functional complex with RPTP β/ζ on the cell surface [5]. Integrin $\alpha_v\beta_3$ directly interacts with PTN and RPTP β/ζ in the chicken embryo CAM [5], is activated on CAM endothelial cells only when there is active angiogenesis [7], and interacts with RPTP β/ζ when there is active angiogenesis, while this interaction is decreased when angiogenesis of the tissue has stopped. However, besides a direct effect on endothelial cells, it is also possible that PTN has an indirect effect, potentiating the angiogenic effect of other growth factors. For example, it has been previously shown that PTN induces proliferation of human peripheral blood mononuclear cells [22] and increases the mRNA expression of the VEGF receptor Flt-1 in endothelial cell cultures [23]. Flt-1 is expressed by monocytes and its expression is increased after monocyte activation [24]. In the same line, recent findings show that PTN induces transformation of monocytes into functional endothelial cells, thus supporting angiogenesis [25, 26]. It may be possible that at least part of the angiogenic effect of PTN in the chicken embryo CAM is due to activation of CAM blood cells.

It is well known that PTN activates ERK1/2 in several types of cells [27– 29], among which endothelial cells [4], and this pathway has been linked to stimulation of endothelial cell proliferation [28] and migration [4]. In the present study we show that decreased expression of endogenous PTN leads to decreased ERK1/2 activity, which correlates with the effect on tissue angiogenesis, suggesting that PTN-induced ERK1/2 activation may be important for the stimulation of PTN's angiogenic activities *in vivo*, similarly to what has been known from *in vitro* studies [4, 28].

It is noteworthy that in the CAM, endogenous PTN is also localized in the nucleus of endothelial cells. Similar observation has been obtained using HUVEC and U87MG cells (present study), as well as other types of cells that express endogenous PTN, such as neonatal cardiomyocytes [30]. Over the past years, evidence has accumulated that several growth factors related to angiogenesis and tumour growth, as well as their receptors, are found in the cell nucleus. Although this nuclear distribution might be related to the transcriptional activation of genes involved in the angiogenic cascade, at the moment the precise function of this process is completely unknown (reviewed in [31]). Nuclear translocation of PTN has been previously discussed, based on the observations that its primary structure contains three potential nuclear targeting sequences [32], it was found to bind to NCL [33], and NCL was found to participate in midkine nuclear translocation [10, 33]. Although interaction of PTN with NCL has been previously mentioned [8], it is the first time that it is clearly shown that NCL participates in PTN nuclear translocation. At the moment, the functional significance of the nuclear localization of PTN is completely unknown. One possibility for the role of nuclear PTN could be an involvement in cell cycle progression. It has been previously shown that interruption of PTN expression induces tetraploidy and aneuploidy in U87MG cells and may contribute to the reversal of their

highly malignant phenotype [34]. Another possibility might be a role in apoptosis. There are many studies supporting an anti-apoptotic effect of PTN [35– 38], in line with studies supporting an anti-apoptotic effect of NCL [39– 41]. However, it has not been clear whether this anti-apoptotic effect is due to the nuclear localization of PTN and further studies are required to elucidate this point. Finally, it has been recently shown that NCL interacts with the G-rich strands in the pPu/pPy tract of the VEGF promoter and acts as transcriptional activator of the VEGF gene [42]. PTN also promotes VEGF expression [21] and the possibility that PTN and NCL co-operate in regulating expression of several molecules is interesting and is further studied.

Besides translocation to the nucleus, NCL seems to also participate in PTN-induced endothelial cell migration. This seems to be mediated mainly by the cell surface NCL and to the best of our knowledge, this is the first study to show direct interaction between the two molecules on the cell surface and implication of NCL in angiogenic functions of PTN. Extranuclear distribution of NCL has been observed in both endothelial [17] and cancer [19, 43, 44] cells and seems to participate in functions that lead to angiogenesis and tumour growth, through yet unknown mechanisms. A specific antagonist that binds the C-terminal tail of NCL, similarly to the 5(KPR)TASP peptide we used in the present study, decreased blood vessel branching in the chicken embryo CAM [43]. This peptide forms a stable complex with cell surface-expressed NCL [43], suggesting that the latter plays a role in CAM angiogenesis and participates in PTN-induced endothelial cell migration. A number of recent studies suggest that several molecules that affect angiogenesis and tumour growth act through cell surface NCL, such as hepatocyte growth factor [45], VEGF [46], endostatin [47, 48] and tumour necrosis factor- α inducing protein [49], favouring the notion that targeting of cell surface NCL may prove to be an effective anticancer therapy [50, 51].

In summary, our data suggest that expression of endogenous PTN and its receptor RPTP β/ζ in the CAM is related to new blood vessel formation. PTN seems to be involved in angiogenesis of the tissue, possibly through interaction with its cell surface receptors and ERK1/2 activation. NCL interacts with PTN on the cell surface, is involved in the nuclear translocation of PTN and may have a role in the angiogenic functions of PTN both *in vivo* and *in vitro*.

Additional file 1: Co-immunoprecipitation of RPTP β/ζ with $\alpha_v\beta_3$ in the chicken embryo CAM during embryo development. Three mg of total protein from chicken embryo CAM extracts from different developmental stages were subjected to immunoprecipitation for $\alpha_v\beta_3$. Precipitated proteins were analyzed by SDS-PAGE, followed by Western blot analysis for the presence of RPTP β/ζ . Both transmembrane splice variants of RPTP β/ζ (Garwood *et al.*, *J Biol Chem* 2003, 278:24164-24173) have been detected. (PDF 441 KB)

Additional file 2: Detection of PROX-1 in the chicken embryo CAM during embryo development. Equal amounts of protein extracts of chicken embryo CAM from different developmental stages were analyzed by SDS-PAGE, followed by Western blot analysis for PROX-1 and actin. (PDF 143 KB)

Additional file 3: Interaction of PTN with NCL in human glioma U87MG cells. A. Equal total protein amounts of subcellular fractions of U87MG cells were immunoprecipitated for NCL and PTN and analyzed by Western Blot analysis for the same molecules. B. Equal total protein amounts of subcellular fractions of U87MG cells were immunoprecipitated for NCL or PTN and analyzed by Western Blot analysis for PTN or NCL respectively. It should be noted that nuclear NCL was also detected as a band of lower molecular mass than extranuclear NCL, in line with the described posttranslational modifications of extranuclear NCL with complex N- and Oglycosylations (Carpentier *et al.*, *Biochemistry* 2005, 44:5804-5815). (PDF 422 KB)

Additional file 4: Exogenous administration of human recombinant PTN increased the mRNA levels of VEGF₁₉₀ and VEGF₁₆₅ and activated metalloproteinase (MMP)-2 in the chicken embryo CAM. A. Products of RT-PCR reactions for chicken VEGF₁₉₀ and VEGF₁₆₅ and GAPDH from mRNA of chicken embryo CAM after application of different doses of PTN. The primers used in the present study amplified both variants of avian VEGF, as previously described (Giannopoulou *et al.*, *J Pharmacol Exp Ther* 2003, 304:729-737). B. Equal amounts of total protein extracts of chicken embryo CAM from different developmental stages were analyzed by SDS-PAGE, followed by zymography for MMP-2 and Western analysis for actin. MMP-2 is the predominant metalloprotease detected in the CAM (Ribatti *et al.*, *J Pharmacol Exp Ther* 2003, 304:729-737; Giannopoulou *et al.*, *Int J Cancer* 2001, 94:690-698). (PDF 372 KB)

Declarations

Acknowledgements and funding

This research has been co-financed by the European Union (European Social Fund - ESF) and Greek national funds through the Operational Program "Education and Lifelong Learning" of the National Strategic Reference Framework (NSRF) - Research Funding Program: "Heracleitus II. Investing in knowledge society through the European Social Fund". The authors are grateful to Prof. Zoi Lygerou, Dept. of Medicine, University of Patras, for her kind hospitality and help with confocal microscopy. They would also like to thank Dr. Panagiota Ravazoula at the Patras University Hospital for her advice concerning handling of CAM paraffin sections.

Authors' original submitted files for images

Below are the links to the authors' original submitted files for images.

Authors' original file for figure 1

Authors' original file for figure 2

Authors' original file for figure 3

Authors' original file for figure 4

Authors' original file for figure 5

Authors' original file for figure 6

Marina Koutsoumpa, Georgia Drosou contributed equally to this work.

Competing interests

The authors declare that they have no competing interests.

Authors' contributions

GD performed CAM transfections, Western blot analyses and angiogenesis assays following transfections. MK performed all migration assays, siRNA cell transfections, immunofluorescent assays and cell fractionations, participated in the immunoprecipitation assays and helped preparing the draft of the manuscript. CM, KT and DV participated in histochemistry, immunoprecipitation and Western blot assays on CAM tissues. PK participated in Western blot and immunohistochemistry assays at different developmental stages. EG performed immunohistochemistry and RT-PCR assays. JC participated in the design of the work related to the role of NCL. CP, VM and PC worked on the 5(KPR)TASP peptide synthesis. EP designed the work, performed the statistical analysis and wrote the manuscript. All authors read and approved the final manuscript.

References

1. Mikelis C, Koutsoumpa M, Papadimitriou E. **Pleiotrophin as a possible new target for angiogenesis-related diseases and cancer.** *Recent Pat Anticancer Drug Discov.* 2007;2:175-186.
[View Article](#) [Google Scholar](#)
2. Papadimitriou E, Mikelis C, Lampropoulou E, Koutsoumpa M, Theochari K, Tsirmoula S, Theodoropoulou C, Lamprou M, Sfaelou E, Vourtsis D, Boudouris P. **Roles of pleiotrophin in tumor growth and angiogenesis.** *Eur Cytokine Netw.* 2009;20:180-190.
[View Article](#) [Google Scholar](#)
3. Papadimitriou E, Polykratis A, Courty J, Koolwijk P, Heroult M, Katsoris P. **HARP induces angiogenesis and : implication of N or C terminal peptides.** *Biochem Biophys Res Commun.* 2001;282:306-313.
[View Article](#) [Google Scholar](#)
4. Polykratis A, Katsoris P, Courty J, Papadimitriou E. **Characterization of heparin affin regulatory peptide signaling in human endothelial cells.** *J Biol Chem.* 2005;280:22454-22461.
[View Article](#) [Google Scholar](#)
5. Mikelis C, Sfaelou E, Koutsoumpa M, Kieffer N, Papadimitriou E. **Integrin alpha(v)beta(3) is a pleiotrophin receptor required for pleiotrophin-induced endothelial cell migration through receptor protein tyrosine phosphatase beta/zeta.** *FASEB J.* 2009;23:1459-1469.
[View Article](#) [Google Scholar](#)
6. Westlin WF. **Integrins as targets of angiogenesis inhibition.** *Cancer J.* 2001;7:S139-143.
[View Article](#) [Google Scholar](#)
7. Brooks PC, Clark RA, Cheresh DA. **Requirement of vascular integrin avb3 for angiogenesis.** *Science.* 1994;264:569-571.
[View Article](#) [Google Scholar](#)
8. Said EA, Courty J, Svab J, Delbé J, Krust B, Hovanessian AG. **Pleiotrophin inhibits HIV infection by binding the cell surface-expressed nucleolin.** *FEBS J.* 2005;272:4646-4659.
[View Article](#) [Google Scholar](#)

9. Hovanessian AG, Puvion-Dutilleul F, Nisole S, Svab J, Perret E, Deng JS, Krust B. The cell-surface-expressed nucleolin is associated with the actin cytoskeleton. *Exp Cell Res.* 2000;261:312-328.
[View Article](#) [Google Scholar](#)
10. Shibata Y, Muramatsu T, Hirai M, Inui T, Kimura T, Saito H, McCormick LM, Bu G, Kadomatsu K. Nuclear targeting by the growth factor midkine. *Mol Cell Biol.* 2002;22:6788-6796. 10.1128/MCB.22.19.6788-6796.2002
11. Hatziapostolou M, Delbe J, Katsoris P, Polytarchou C, Courty J, Papadimitriou E. Heparin affinity regulatory peptide is a key player in prostate cancer cell growth and angiogenicity. *Prostate.* 2005;65:151-158.
[View Article](#) [Google Scholar](#)
12. Giannopoulou E, Katsoris P, Hatziapostolou M, Kardamakis D, Kotsaki E, Polytarchou C, Parthymou A, Papaioannou S, Papadimitriou E. X-rays modulate extracellular matrix. *Int J Cancer.* 2001;94:690-698.
[View Article](#) [Google Scholar](#)
13. Polytarchou C, Gligoris T, Kardamakis D, Kotsaki E, Papadimitriou E. X-rays affect the expression of genes involved in angiogenesis. *Anticancer Res.* 2004;24:2941-2945.
[View Article](#) [Google Scholar](#)
14. Lee PT, Liao LP, Chang WC, Tseng JT. Epidermal growth factor increases the interaction between nucleolin and heterogeneous nuclear ribonucleoprotein K/poly(C) binding protein 1 complex to regulate the gastrin mRNA turnover. *Mol Biol Cell.* 2007;18:5004-5013. 10.1091/mbc.E07-04-0384
15. Nisole S, Krust B, Hovanessian AG. Anchorage of HIV on permissive cells leads to coaggregation of viral particles with surface nucleolin at membrane raft microdomains. *Exp Cell Res.* 2002;276:155-173.
[View Article](#) [Google Scholar](#)
16. Callebaut C, Jacotot E, Krust B, Guichard G, Blanco J, Valenzuela A, Svab J, Muller S, Briand JP, Hovanessian AG. Pseudopeptide TASP inhibitors of HIV entry bind specifically to a 95-kDa cell surface protein. *J Biol Chem.* 1997;272:7159-7166.
[View Article](#) [Google Scholar](#)
17. Christian S, Pilch J, Akerman ME, Porkka K, Laakkonen P, Ruoslahti E. Nucleolin expressed at the cell surface is a marker of endothelial cells in angiogenic blood vessels. *J Cell Biol.* 2003;163:871-878. 10.1083/jcb.200304132
18. Shi H, Huang Y, Zhou H, Song X, Yuan S, Fu Y, Luo Y. Nucleolin is a receptor that mediates antiangiogenic and antitumor activity of endostatin. *Blood.* 2007;110:2899-2906.
[View Article](#) [Google Scholar](#)
19. Di Segni A, Farin K, Pinkas-Kramarski R. Identification of nucleolin as new ErbB receptors-interacting protein. *PLoS One.* 2008;3:e23102. 10.1371/journal.pone.0002310
20. Ausprunk DH, Knighton DR, Folkman J. Differentiation of vascular endothelium in the chick chorioallantois: a structural and autoradiographic study. *Dev Biol.* 1974;38:237-248.
[View Article](#) [Google Scholar](#)
21. Kong Y, Bai PS, Nan KJ, Sun H, Chen NZ, Qi XG. Pleiotrophin is a potential colorectal cancer prognostic factor that promotes VEGF expression and induces angiogenesis in colorectal cancer. *Int J Colorectal Dis.* 2012;27:287-298.
[View Article](#) [Google Scholar](#)
22. Achour A, Laaroubi D, Caruelle D, Barritault D, Courty J. The angiogenic factor heparin affinity regulatory peptide (HARP) induces proliferation of human peripheral blood mononuclear cells. *Cell Mol Biol (Noisy-le-grand).* 2001;47:1-6.
[View Article](#) [Google Scholar](#)
23. Kokolakis G, Mikelis C, Papadimitriou E, Courty J, Karetso E, Katsoris P. Effect of heparin affinity regulatory peptide on the expression of vascular endothelial growth factor receptors in endothelial cells. *In Vivo.* 2006;20:629-635.
[View Article](#) [Google Scholar](#)

24. Shibuya M. Structure and dual function of vascular endothelial growth factor receptor-1 (Flt-1). *Int J Biochem Cell Biol.* 2001;33:409-420.
[View Article](#) [Google Scholar](#)
25. Sharifi BG Zeng Z Wang L Song L Chen H Qin M Sierra-Honigmann MR Wachsmann-Hogiu S Shah PK Pleiotrophin induces transdifferentiation of monocytes into functional endothelial cells *Arterioscler Thromb Vasc Biol* 2006 26 1273 12803579570 10.1161/01.ATV.0000222017.05085.8e
26. Chen H Campbell RA Chang Y Li M Wang CS Li J Sanchez E Share M Steinberg J Berenson A Shalitin D Zeng Z Gui D Perez-Pinera P Berenson RJ Said J Bonavida B Deuel TF Berenson JR Pleiotrophin produced by multiple myeloma induces transdifferentiation of monocytes into vascular endothelial cells: a novel mechanism of tumor-induced vasculogenesis *Blood* 2009 113 1992 20022651013 10.1182/blood-2008-02-133751
27. Stoica GE, Kuo A, Aigner A, Sunitha I, Souttou B, Malerczyk C, Caughey DJ, Wen D, Karavanov A, Riegel AT, Wellstein A. Identification of anaplastic lymphoma kinase as a receptor for the growth factor pleiotrophin. *J Biol Chem.* 2001;276:16772-16779.
[View Article](#) [Google Scholar](#)
28. Souttou B, Ahmad S, Riegel AT, Wellstein A. Signal transduction pathways involved in the mitogenic activity of pleiotrophin. Implication of mitogen-activated protein kinase and phosphoinositide 3-kinase pathways. *J Biol Chem.* 1997;272:19588-19593.
[View Article](#) [Google Scholar](#)
29. Gramage E, Putelli A, Polanco MJ, González-Martín C, Ezquerra L, Alguacil LF, Pérez-Pinera P, Deuel TF, Herradón G. The neurotrophic factor pleiotrophin modulates amphetamine-seeking behaviour and amphetamine-induced neurotoxic effects: evidence from pleiotrophin knockout mice. *Addict Biol.* 2010;15:403-412.
[View Article](#) [Google Scholar](#)
30. Li J, Wei H, Chesley A, Moon C, Krawczyk M, Volkova M, Ziman B, Margulies KB, Talan M, Crow MT, Boheler KR. The pro-angiogenic cytokine pleiotrophin potentiates cardiomyocyte apoptosis through inhibition of endogenous AKT/PKB activity. *J Biol Chem.* 2007;282:34984-34993.
[View Article](#) [Google Scholar](#)
31. Re RN, Cook J. An intracrine view of angiogenesis. *Bioessays.* 2006;28:943-953.
[View Article](#) [Google Scholar](#)
32. Hampton BS Marshak DR Burgess WH Structural and functional characterization of full-length heparin-binding growth associated molecule *Mol Biol Cell* 1992 3 85 93275504 10.1091/mbc.3.1.85
33. Take M, Tsutsui JI, Obama H, Ozawa M, Nakayama T, Maruyama I, Arima T, Muramatsu T. Identification of nucleolin as a binding protein for midkine (MK) and heparin-binding growth associated molecule (HB-GAM). *J Biochem.* 1994;116:1063-1068.
[View Article](#) [Google Scholar](#)
34. Chang Y Berenson J Wang Z Deuel TF Dominant negative pleiotrophin induces tetraploidy and aneuploidy in U87MG human glioblastoma cells *Biochem Biophys Res Commun* 2006 351 336 3391850963 10.1016/j.bbrc.2006.09.148
35. Bowden ET, Stoica GE, Wellstein A. Anti-apoptotic signaling of pleiotrophin through its receptor, anaplastic lymphoma kinase. *J Biol Chem.* 2002;277:35862-35868.
[View Article](#) [Google Scholar](#)
36. Zhang N Yeh HJ Zhong R Li YS Deuel TF A dominant-negative pleiotrophin mutant introduced by homologous recombination leads to germ-cell apoptosis in male mice *Proc Natl Acad Sci USA* 1999 96 6734 673821984 10.1073/pnas.96.12.6734
37. Park TJ, Jeong BR, Tateno C, Kim HS, Ogawa T, Lim IK, Yoshizato K. Pleiotrophin inhibits transforming growth factor beta1-induced apoptosis in hepatoma cell lines. *Mol Carcinog.* 2008;47:784-796.
[View Article](#) [Google Scholar](#)

38. Soh BS, Song CM, Vallier L, Li P, Choong C, Yeo BH, Lim EH, Pedersen RA, Yang HH, Rao M, Lim B. **Pleiotrophin enhances clonal growth and long-term expansion of human embryonic stem cells.** *Stem Cells.* 2007;25:3029-3037.
[View Article](#) [Google Scholar](#)
39. Fogal V, Sugahara KN, Ruoslahti E, Christian S. **Cell surface nucleolin antagonist causes endothelial cell apoptosis and normalization of tumor vasculature.** *Angiogenesis.* 2009;12:91-100.
[View Article](#) [Google Scholar](#)
40. Ishimaru D, Zuraw L, Ramalingam S, Sengupta TK, Bandyopadhyay S, Reuben A, Fernandes DJ, Spicer EK. **Mechanism of regulation of bcl-2 mRNA by nucleolin and A + U-rich element-binding factor 1 (AUF1)** *J Biol Chem* 2010 285 27182 271912930717 10.1074/jbc.M109.098830
41. Destouches D, Page N, Hamma-Kourbali Y, Machi V, Chaloin O, Frechault S, Birmpas C, Katsoris P, Beyrath J, Albanese P, Maurer M, Carpentier G, Strub JM, Van Dorselaer A, Muller S, Bagnard D, Briand JP, Courty J. **A simple approach to cancer therapy afforded by multivalent pseudo-peptides that target cell-surface nucleoproteins.** *Cancer Res.* 2011;71:3296-3305.
[View Article](#) [Google Scholar](#)
42. Uribe DJ, Guo K, Shin YJ, Sun D. **Heterogeneous nuclear ribonucleoprotein K and nucleolin as transcriptional activators of the vascular endothelial growth factor promoter through interaction with secondary DNA structures** *Biochemistry* 2011 50 3796 38063119528 10.1021/bi101633b
43. Destouches D, El Khoury D, Hamma-Kourbali Y, Krust B, Albanese P, Katsoris P, Guichard G, Briand JP, Courty J, Hovanessian AG. **Suppression of tumor growth and angiogenesis by a specific antagonist of the cell-surface expressed nucleolin** *PLoS One* 2008 3 e25182424174 10.1371/journal.pone.0002518
44. Hoja-Łukowicz D, Przybyło M, Pocheć E, Drabik A, Silberring J, Kremser M, Schadendorf D, Laidler P, Lityńska A. **The new face of nucleolin in human melanoma.** *Canc Immunol Immunother.* 2009;58:1471-1480.
[View Article](#) [Google Scholar](#)
45. Tate A, Isotani S, Bradley MJ, Sikes RA, Davis R, Chung LW, Edlund M. **Met-Independent Hepatocyte Growth Factor-mediated regulation of cell adhesion in human prostate cancer cells** *BMC Cancer* 2006 6 1971559714 10.1186/1471-2407-6-197
46. Huang Y, Shi H, Zhou H, Song X, Yuan S, Luo Y. **The angiogenic function of nucleolin is mediated by vascular endothelial growth factor and nonmuscle myosin.** *Blood.* 2006;107:3564-3571.
[View Article](#) [Google Scholar](#)
47. Shi H, Huang Y, Zhou H, Song X, Yuan S, Fu Y, Luo Y. **Nucleolin is a receptor that mediates antiangiogenic and antitumor activity of endostatin.** *Blood.* 2007;110:2899-2906.
[View Article](#) [Google Scholar](#)
48. Zhuo W, Luo C, Wang X, Song X, Fu Y, Luo Y. **Endostatin inhibits tumour lymphangiogenesis and lymphatic metastasis via cell surface nucleolin on lymphangiogenic endothelial cells.** *J Pathol.* 2010;222:249-260.
[View Article](#) [Google Scholar](#)
49. Watanabe T, Tsuge H, Imagawa T, Kise D, Hirano K, Beppu M, Takahashi A, Yamaguchi K, Fujiki H, Suganuma M. **Nucleolin as cell surface receptor for tumor necrosis factor-alpha inducing protein: a carcinogenic factor of Helicobacter pylori.** *J Cancer Res Clin Oncol.* 2010;136:911-921.
[View Article](#) [Google Scholar](#)
50. Mongelard F, Bouvet P. **AS-1411, a guanosine-rich oligonucleotide aptamer targeting nucleolin for the potential treatment of cancer, including acute myeloid leukemia.** *Curr Opin Mol Ther.* 2010;12:107-114.
[View Article](#) [Google Scholar](#)
51. Weidle UH, Maisel D, Klostermann S, Schiller C, Weiss EH. **Intracellular proteins displayed on the surface of tumor cells as targets for therapeutic intervention with antibody-related agents.** *CANCER GENOMICS PROTEOMICS.* 2011;8:49-63.
[View Article](#) [Google Scholar](#)

