

# Notch regulates the angiogenic response via induction of VEGFR-1

Yasuhiro Funahashi, <sup>1, 2</sup> Carrie J Shawber, <sup>1</sup> Marina Vorontchikhina, <sup>1</sup> Anshula Sharma, <sup>1</sup> Hasina H Outtz, <sup>1</sup> Jan Kitajewski, <sup>1</sup>, f, @

@ corresponding author, & equal contributor

Journal of Angiogenesis Research. 2010; **2**(1):3 | © Funahashi et al

Received: 4 September 2009 | Accepted: 26 January 2010 | Published: 26 January 2010

Vascular Cell ISSN: 2045-824X

DOI: <https://doi.org/10.1186/2040-2384-2-3>

## Author information

1. Pathology, Obstetrics and Gynecology, and Herbert Irving Comprehensive Cancer Center - Columbia University Medical Center; New York, NY 10032, USA

2. Tsukuba Research Laboratories - Eisai Co, Ltd; Ibaraki, Japan

[f] [jk9@columbia.edu](mailto:jk9@columbia.edu)

## Abstract

Notch is a critical regulator of angiogenesis and arterial specification. We show that ectopic expression of activated Notch1 induces endothelial morphogenesis in human umbilical vein endothelial cells (HUVEC) in a VEGFR-1-dependent manner. Notch1-mediated upregulation of VEGFR-1 in HUVEC increased their responsiveness to the VEGFR-1 specific ligand, Placental Growth Factor (PIGF). In mice and human endothelial cells, inhibition of Notch signaling resulted in decreased VEGFR-1 expression during VEGF-A-induced neovascularization. In summary, we show that Notch1 plays a role in endothelial cells by regulating VEGFR-1, a function that may be important for physiological and pathological angiogenesis.

## Introduction

Vascular endothelial growth factor-A (VEGF-A) is essential to the multistep process of vascular development, and proper vessel formation in a variety of settings is exquisitely sensitive to levels of VEGF-A [1-4]. VEGF-A signals through two receptor tyrosine kinases: VEGFR-1 (flt1) and VEGFR-2 (flk1), while placenta growth factor (PIGF) signals exclusively through VEGFR-1. Both VEGF-A and PIGF induce endothelial cell proliferation, survival, and migration [3, 5, 6]. The role of VEGFR-1 in angiogenesis has largely been defined in terms of its opposition to VEGFR-2. VEGFR-2 is considered the primary VEGF-A receptor that drives angiogenesis, while VEGFR-1 has high binding affinity for VEGF-A but weak kinase activity. Thus, VEGFR-1 is thought to function mainly as a decoy receptor that sequesters VEGF-A [7-11]. This concept is supported by analysis of mouse models where deletion of *flt1* led to vessel overgrowth and disruption of vascular patterning [12]. In addition, mice expressing a mutant allele of *flt1* that lacks the tyrosine kinase domain (*flt1*<sup>TK-/-</sup>) did not exhibit the vascular patterning defects seen in *flt1*<sup>-/-</sup> mice, suggesting that in embryonic development, the kinase activity of VEGFR-1 was

dispensable and that its predominant function is via its high affinity binding to VEGF-A [9]. Despite this, a positive function for VEGFR-1 in angiogenesis has been demonstrated in a variety of settings. *flt1*<sup>TK-/-</sup> mice displayed defects in tumor vessel formation and metastasis [13, 14], and inhibition of VEGFR-1 led to defects in neovascularization of the eye [15]. The signaling pathways that regulate VEGFR-1 expression in endothelial cells remain unclear.

Notch, a receptor that functions in cell fate decisions, has been shown to be downstream of VEGF-A in endothelial sprouting [16, 17] and arterial specification [18, 19]. The Notch proteins are highly conserved trans-membrane receptors that are required for normal embryonic development. In mammals, there are four Notch proteins (Notch1-4) that, upon binding with one of five ligands, termed Delta-like (Dll) and Jagged, are subject to a series of proteolytic cleavages by ADAM metalloproteases and gamma-secretase. Cleavage releases the intracellular domain of the Notch receptor, which translocates to the nucleus and functions as a transcriptional activator in complex with the transcription factors CSL (CBF1, Su(H), Lag-2), Mastermind, and histone acetyltransferases. To

date, the importance of the Notch pathway in regulating endothelial cell response to VEGF-A has been studied with respect to its effect on VEGFR-2, as it has been shown that Delta-like 4 (Dll4) signaling represses VEGFR-2 expression [16, 20, 21]. Current models assert a role for Dll4 in restricting sprouting angiogenesis [20, 22–24], but have not identified the Notch receptors that are important for this effect, or whether Notch signaling can function positively in endothelial cell morphogenesis. In addition, whether Notch signaling through a particular receptor can regulate VEGFR-1 expression in endothelial cells has not been defined.

Using ectopic expression as well as protein-based,

and pharmacological loss of Notch function, we show that VEGFR-1 expression is downstream of Notch signaling in endothelial cells. Furthermore, we define a positive role for Notch signaling in VEGF-driven morphogenesis of endothelial cells via promotion of cell extension which we demonstrate requires upregulation of VEGFR-1. Coincident with the Notch-mediated upregulation of VEGFR-1, we report Notch signaling enhances endothelial cell responsiveness to PlGF. Finally, in an assay of VEGF-A induced dermal angiogenesis, we show that a protein based Notch inhibitor, the Notch1 decoy, can reduce VEGFR-1 levels in neovessels. Collectively, our data define a role for Notch in mediating the response of endothelial to angiogenic stimuli by regulation of VEGFR-1.

## Materials and methods

### Reagents, Expression Vectors

ZD1893, PD166866, and SU5416 are from Eisai Co., Ltd. Compound E was obtained from the Korean Research Institute of Chemical Technology. PlGF was obtained from Research Diagnostics Institute. N1IC [25], LacZ, and VEGF-A constructs were engineered into pAdlox vector and adenovirus stocks were produced [26]. Notch1 decoy has been described [27]. Briefly, the extracellular domain of rat Notch1 (bp 241–4229, accession no. X57405) was fused to human IgG Fc and engineered into pAdlox vector (Ad-Notch1 decoy) and adenovirus stocks generated.

### Cell Culture, Adenoviral Infections, retroviral infections, siRNA

HUVEC were isolated from human umbilical vein as described [28] and cultured in complete medium (EGM-2 Bullet kit, LONZA) on porcine type I collagen (Nitta Gelatine). KP1/VEGF<sup>121</sup> cells were provided by Eisai Co., Ltd, [27] and maintained in RPMI 1640 containing 10% FBS. HUVEC were infected with Ad-LacZ, Ad-N1IC, Ad-VEGF-A, Ad-GFP, or Ad-Notch1 decoy at a MOI of 40. HUVEC were co-infected with Ad-LacZ and Ad-Notch1 decoy at a MOI of 40 for each virus. HUVEC infected with Ad-LacZ at a MOI of 80 served as a control. Retroviral control and N1IC-expressing HUVEC lines were generated as previously described [29]. Control, VEGFR-1, and VEGFR-2 siRNA (Santa Cruz) were introduced into HUVEC using Effectene Reagent (Qiagen). Total RNA or cell lysate was harvested 48 hours after siRNA transfection.

### RT-PCR

HUVEC were seeded on type I collagen gels two days after adenoviral infection or retroviral infection and 5 days later total RNA was isolated with RNeasy mini kit (Qiagen). First-strand cDNA was synthesized using SuperScript First-Strand Synthesis System (Invitrogen). For RT-PCR, primers were designed to recognize human and mouse transcripts of VEGFR-1, VEGFR-2, VEGF-A, PlGF, GAPDH and beta-actin, (primer sequence available

upon request). PCR used Platinum Taq DNA polymerase (Invitrogen) and reactions performed for 25 or 30 cycles. Reactions were performed in triplicate.

### Western Blotting

HUVEC were cultured on type I collagen gels for 5 days in complete medium, then starved in serum free medium for 48 hours and cell lysates were collected with TENT lysis buffer. Western blots were performed using antibodies against Flt1 (C-17, Santa Cruz), Flk1 (C-1158, Santa Cruz), and alpha-tubulin (Sigma). To validate Notch1 decoy secretion, serum-free medium from adenovirally transduced HUVEC was used for western blot analysis using an antibody against the Fc tag (Pierce).

### HUVEC Morphogenesis Assay

Adenovirus infections were performed two days before seeding on porcine type I collagen, and HUVEC morphogenesis was assessed by microscopy after 5 days, as described [30]. Extensions were scored as number of cells with single or multiple processes per 10× microscopy field. Processes were defined as extensions at acute angles to the cell body that alter normal HUVEC morphology. For each experiment, at least five 10× fields of cultures from each condition were scored. Kinase inhibitors were added to the medium one hour after HUVEC seeding, and PlGF was added at the time of HUVEC seeding. For knockdown experiments, siRNA was transfected two days after adenoviral infection and the cells were cultured for three days before assessment of HUVEC with cellular extensions. Cell number was measured using Cell Counting Kit-8 (Dojindo).

### Mouse DAS Assay

The Dorsal Air Sac (DAS) assay was performed as described [31]. Millipore chambers were packed with  $5.0 \times 10^6$  KP1/VEGF<sup>121</sup> cells that were transduced (60 MOI) with either Ad-GFP or Ad-Notch1 decoy and transplanted into a DAS of C57BL/6 mice. Mice were sacrificed four days after implantation and implants harvested and embedded in OCT. Each group consisted of at 3-5

mice, and experiments done in triplicate.

## Immunohistochemistry

5- $\mu$ m serial sections of KP1/VEGF<sup>121</sup> implants were immunostained as described [32]. The following antibodies were used: PECAM (553370, BD Pharmingen), Flt1 (AF417, R&D Systems), Flk1 (AF644, R&D Systems). Quantitative analysis of CD31, Flk1, and Flt1 immunostaining of skin was performed on serial sections using an Eclipse E800 microscope and Nikon DXM 1200 camera, with ImagePro Plus software (Silver Spring, MD). Measurements were made in five different areas in each sample at 20 $\times$  magnification and average density ratio was determined by dividing the area of specific staining by the total area of the smooth muscle layer.

## Flow Cytometry

$2 \times 10^5$  HUVEC were seeded per well in a collagen-coated 6-well plate. 24 hrs after seeding, cells were stimulated with 50 ng/ml recombinant VEGF-A (R&D

Systems) in complete medium, with or without 200 nM Compound E (Korean Research Institute). DMSO was used to treat control cells. 24 hours post-stimulation, cells were harvested with cold PBS, washed, and incubated with rabbit-anti VEGFR-1 (Santa Cruz) for 45 minutes at 4°C. After washing, cells were labeled with anti-rabbit-APC (Jackson ImmunoResearch) for 25 minutes at 4°C. Flow cytometry was performed and 10,000 cells per experimental group were counted using FACSCalibur and CellQuestPro acquisition software (BD Biosciences).

## Statistical Analysis

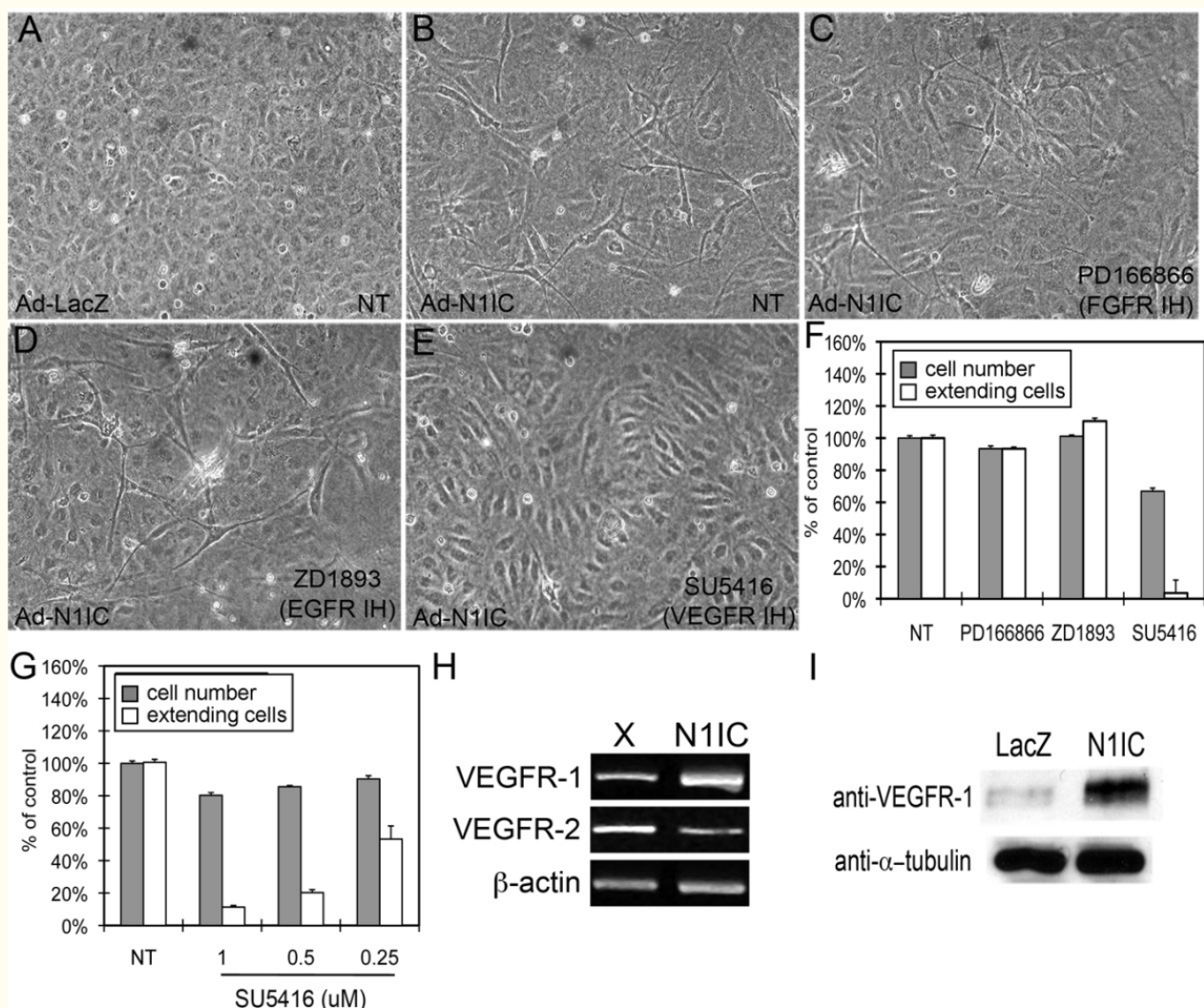
Data were expressed as mean plus or minus SEM. Statistical analysis was performed by 2-tailed student *t* test. P value of less than 0.05 is indicated with \*, P value of less than 0.02 is indicated with \*. All data shown is representative of at least 3 independent experiments.

## Results

### Notch signaling induced cellular extensions and VEGFR-1 expression in HUVEC

We investigated whether Notch1 signaling could affect endothelial cell morphogenesis, as manifested by the appearance of VEGF-A- or Notch-induced cellular extensions from human umbilical vein endothelial cells (HUVEC)[27, 30]. HUVEC were transduced with an adenovirus expressing the intracellular domain of Notch1 (Ad-N1IC) or a control plasmid (Ad-LacZ), and seeded on three-dimensional Type I collagen gels. The N1IC construct encodes a constitutively active, gamma-secretase cleavage-independent form of Notch1 [25]. Ad-infected HUVEC were evaluated and scored for the number of cells forming cellular extensions per field, as well as for cell number, three days after seeding. We found that Ad-N1IC HUVEC displayed an increase in cellular extensions compared to Ad-LacZ cells (Figure 1A-B). Because HUVEC were cultured in the presence of multiple growth factors, we determined if this effect was due to signaling through a particular receptor using specific small

molecule inhibitors for FGFR, EGFR and VEGFR. While inhibitors to fibroblast growth factor receptor (FGFR) or epidermal growth factor receptor (EGFR) did not inhibit extensions in Ad-N1IC HUVEC, SU5416, an inhibitor of VEGFR-1 and VEGFR-2, suppressed N1IC-induced extensions (Figure 1C-E). The reduction in extensions seen with VEGFR inhibition was accompanied by a 33% decrease in cell number (Figure 1F). However, the extension defect seen in cells treated with SU5416 was more dramatic than the decrease in cell number. Inhibition of N1IC-induced extensions in HUVEC with SU5416 was dose-dependent (Figure 1G). In endothelial cells, Notch signaling is known to down-regulate VEGFR-2 expression, thus we hypothesized that the Notch-induced extensions were mediated by VEGFR-1 [20, 29]. Consistent with this hypothesis, we found that N1IC expression induced expression of VEGFR-1 transcripts (Figure 1H) and protein (Figure 1I). We also observed that N1IC suppressed VEGFR-2 transcripts (Figure 1H), similar to previous publications [20, 24]. These data suggest that induction of extensions in Ad-N1IC HUVEC is dependent on VEGFR-1, not VEGFR-2.



**Figure 1**

### Figure 1 caption

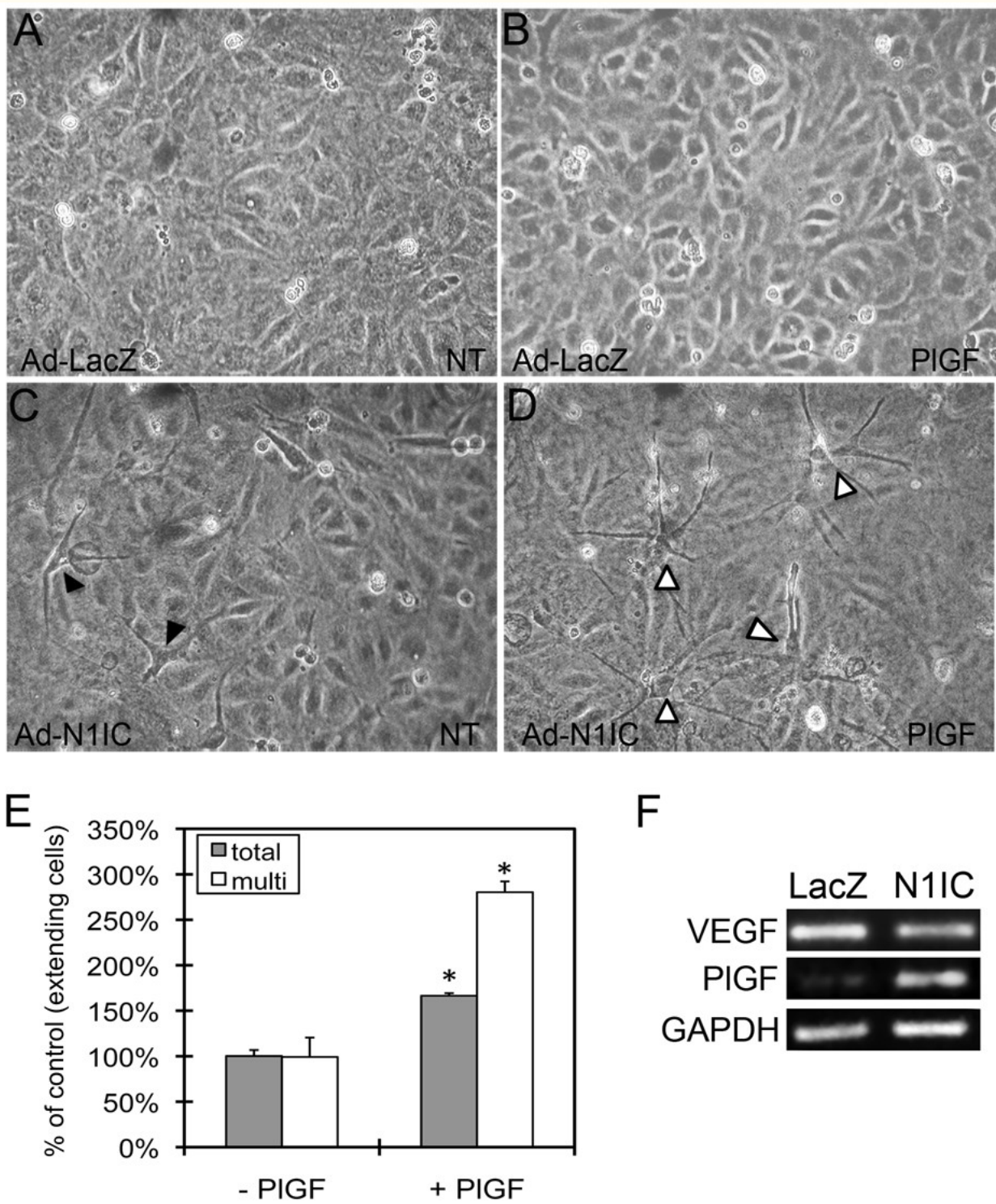
Notch signaling induced cellular extensions and VEGFR-1 expression in HUVEC. HUVEC were transduced with either Ad-LacZ or Ad-N1IC (MOI 40) and seeded on collagen type I gel for five days. Representative images from each cell culture are shown (10 $\times$  magnification). (A) Ad-LacZ HUVEC did not form extensions, (B) while Ad-N1IC HUVEC underwent morphological changes as seen by the sprouting of extensions into the underlying matrix. (C) Morphological differentiation of Ad-N1IC HUVEC was not affected by the addition of 1  $\mu$ M PD166866 (FGFR inhibitor), or (D) 1  $\mu$ M ZD1893 (EGFR inhibitor). (E) The addition of 0.5  $\mu$ M SU5416 (a VEGFR inhibitor), suppressed the morphological differentiation of Ad-N1IC HUVEC. (F) Quantification of the effect of the different tyrosine kinase inhibitors on Notch-induced cellular extensions and cell number. (G) Quantification of the effect of increasing amounts of the VEGFR inhibitor (SU5416) on Notch-induced cellular extensions and cell number. For morphogenesis assays, HUVEC with sprouting extensions per 10 $\times$  microscopy field were counted, for five separate fields. Data is representative of the mean plus or minus SEM of three separate experiments, relative to control. Cell number was determined as percent of control using colorimetric cell proliferation kit. (H) RT-PCR of RNA isolated from mock (X) or N1IC-expressing retrovirally transduced HUVEC lines for VEGFR-1 (30 cycles), VEGFR-2 (30 cycles) and  $\beta$ -actin (25 cycles) (I) Western blot of total cell lysate from Ad-LacZ or Ad-N1IC transduced HUVEC to detect VEGFR-1 protein expression. Detection of  $\alpha$ -tubulin was used as a loading control.



### **Notch1-induced extensions in HUVEC is enhanced by PlGF**

Because ectopic expression of Notch1 induced VEGFR-1, we hypothesized that these cells would exhibit increased responsiveness to the PlGF. Ad-N1IC or control Ad-LacZ HUVEC were cultured on Type I collagen gels in serum free medium, with or without 50 ng/ml PlGF. While PlGF did not induce extensions in control cells (Figure 2A-B), addition of PlGF to N1IC-expressing HUVEC enhanced extensions (Figure 2C-D). Extensions in N1IC-expressing HUVEC were generally one or two processes from a single cell (Figure 2C, black

arrowheads), while addition of PlGF led to a near threefold increase in cells with more than two extensions (Figure 2D, open arrowheads, Figure 2E). Notch was found to increase the levels of PlGF, but not VEGF-A transcripts in HUVEC (Figure 2F), which may contribute to the extensions induced in HUVEC expressing N1IC in the absence of exogenous PlGF. Thus, while PlGF alone is not sufficient to induce HUVEC morphogenesis, in the context of activated Notch1 signaling, PlGF can enhance extensions in these cells, likely due to increased expression of VEGFR-1.



**Figure 2**

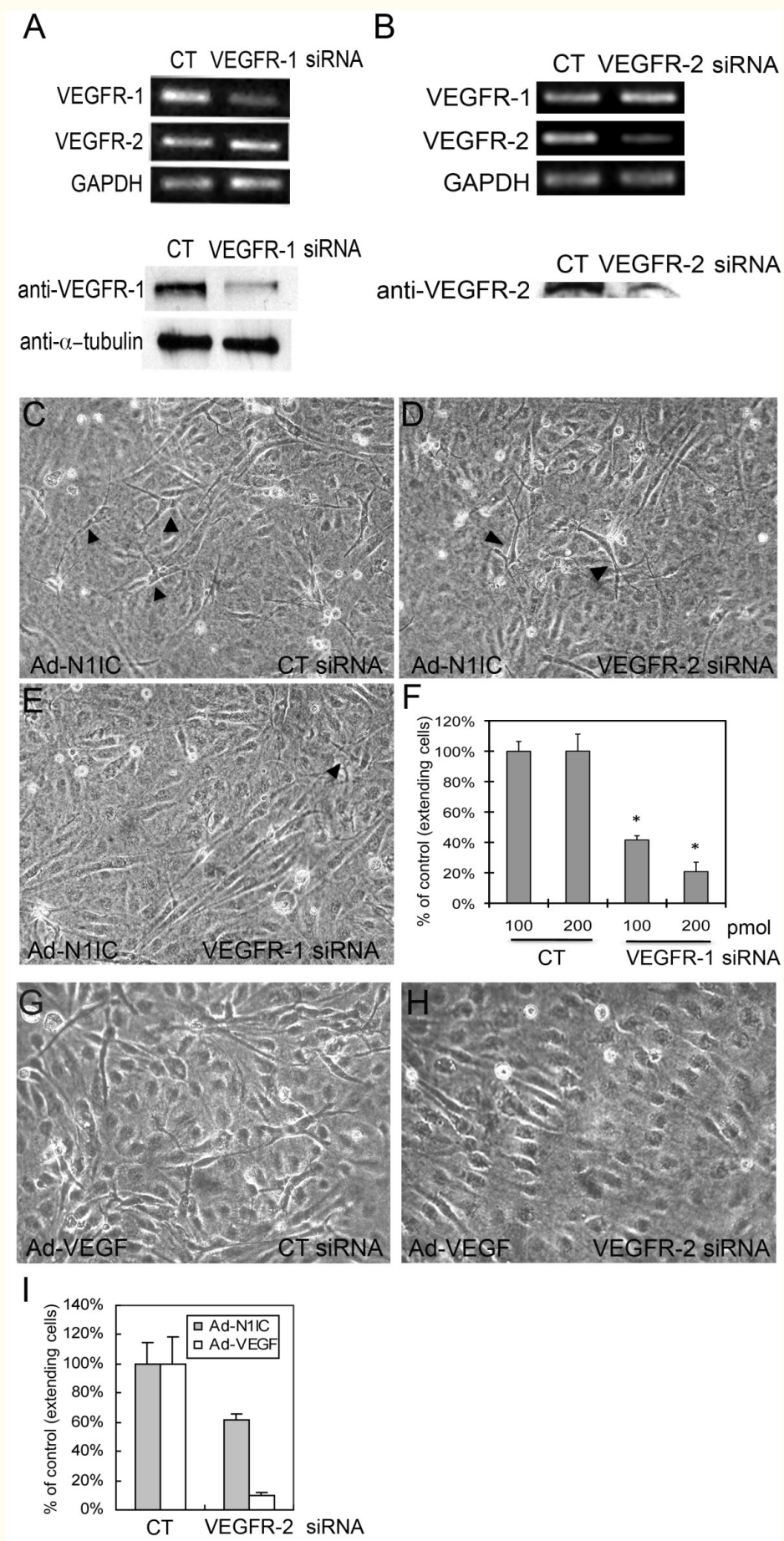
### Figure 2 caption

Notch1-induced HUVEC morphological changes were enhanced by the VEGFR-1-specific ligand PIGF. HUVEC were transduced with Ad-LacZ or Ad-N1IC (MOI 40) and cultured on collagen type I gels in serum free medium with or without 50 ng/ml PIGF and evaluated for the formation of cellular extensions. Representative images from each cell culture are shown (10× magnification). (A-B) Ad-LacZ HUVEC remained a homogenous monolayer in the absence (NT) or presence of PIGF. (C) In the absence of PIGF, Ad-N1IC HUVEC undergo morphological differentiation characterized by one or two extensions per cell (black arrowheads). (D) In presence of PIGF, there is an increase number of Ad-N1IC HUVEC undergoing morphological changes and the number of extensions per cell (open arrowheads). (E) Quantification of total number of Ad-N1IC HUVEC with cellular extensions and cells with multiple (>3) processes with or without PIGF. Number of cells with cellular extensions were counted per 10× field, for five separate fields. Data is representative of the mean plus or minus SD of three separate experiments. \*  $P < 0.01$  compared with cultures without PIGF. (F) RT-PCR of RNA isolated from Ad-LacZ and Ad-N1IC HUVEC for VEGF-A (22 cycles), PIGF (25 cycles) and GAPDH (22 cycles), as a control.

### Reduced VEGFR-1, but not VEGFR-2, inhibited Notch-induced extensions in HUVEC

Though VEGFR-2 expression in endothelial cells is downregulated by Notch signaling (Figure 1H), the possibility that cellular extensions in N1IC-expressing HUVEC is the result of residual VEGFR-2 and that enhanced extensions with PIGF is due to intermolecular crosstalk between VEGFR-1 and VEGFR-2 [33, 34], could not be excluded. To examine these possibilities, Ad-N1IC HUVEC were transfected with VEGFR-1, VEGFR-2, or a control (CT) siRNA and cultured on collagen gels to determine the effect of decreased expression of individual receptors on Notch-induced extensions. Compared to Ad-N1IC HUVEC treated with control siRNA, transcript and protein levels of VEGFR-1 in cells transfected with VEGFR-1 siRNA were reduced, as shown by RT-PCR and western blot (Figure 3A). VEGFR-2 expression was unaltered by the VEGFR-1 siRNA (Figure 3A, left). Similarly, VEGFR-2 siRNA was specific for VEGFR-2, resulting in decreased

transcripts and protein expression, but VEGFR-2 siRNA did not affect levels of VEGFR-1 transcripts (Figure 3B). Transfection of control siRNA did not affect Notch-induced extensions (Figure 3C). VEGFR-2 siRNA resulted in only a modest decrease in the Notch-induced extensions compared to its ability to suppress VEGF-A-induced extensions (Figure 3C, D, G, H). However, transfection of VEGFR-1 siRNA significantly reduced Notch-induced extensions in HUVEC (Figure 3E). Quantification of extensions in these cultures demonstrated that a lower dose of VEGFR-1 siRNA resulted in a less dramatic decrease in the number of extensions compared to control than a higher dose of VEGFR-1 siRNA (42% vs 21% of control, respectively, Figure 3F). Because VEGFR-2 siRNA drastically reduced VEGF-A-induced extensions (Figure 3H, I), but has only a modest affect on Notch-induced extensions (Figure 3D, I), our results support the possibility that Notch1 acts downstream of VEGF-A/VEGFR-2 signaling and induces endothelial cell morphogenesis via VEGFR-1.



**Figure 3**



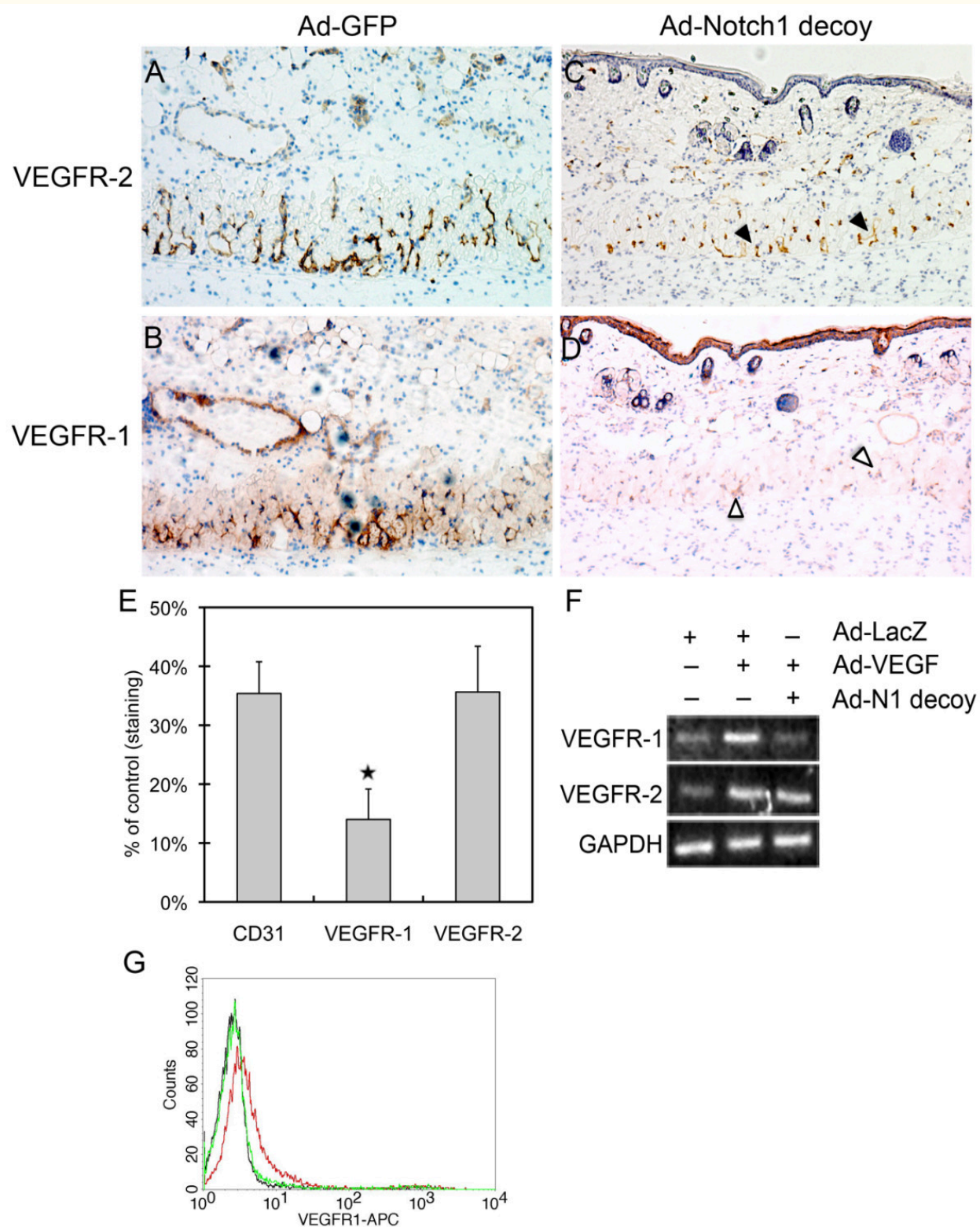
### Figure 3 caption

Notch-induced sprouting in HUVEC did not depend on VEGFR-2 expression. (A, B) Ad-N11C HUVEC were transfected with 200 pmol of control, VEGFR-1 or VEGFR-2 siRNA and cultured on collagen gels. (A, upper panels) RT-PCR of Ad-N11C HUVEC transfected with control (CT), or VEGFR-1 siRNA for VEGFR-1 and VEGFR-2 (25 cycles each) and (lower panels) western blot with an antibody against VEGFR-1 demonstrated decreased transcript and protein levels of VEGFR-1 in cells transfected with VEGFR-1 siRNA relative. VEGFR-2 transcripts were unchanged by VEGFR-1 siRNA. GAPDH (25 cycles) and  $\alpha$ -tubulin were used as controls for the RT-PCR and western blot, respectively. (B, upper panels) RT-PCR of Ad-N11C HUVEC transfected with control (CT) or VEGFR-2 siRNA for VEGFR-1, VEGFR-2 and GAPDH (25 cycles each) and (lower panels) western blot with an antibody against VEGFR-2. VEGFR-2 siRNA suppressed VEGFR-2 transcripts and protein, but did not alter VEGFR-1 transcripts. (C-E) Three days after transfection with control, VEGFR-1 or VEGFR-2 siRNAs, Ad-N11C HUVEC were evaluated for morphological changes (compare cell extensions, black arrowheads). Representative images are shown (10 $\times$  magnification). (C) N11C-induced cellular extensions was unaffected by control siRNA. (D) VEGFR-2 siRNA resulted in a modest decrease in Notch-induced morphological changes. (E) VEGFR-1 siRNA suppressed the morphological differentiation of Ad-N11C HUVEC. (F) Quantification of the effect of either 100 or 200 pmol VEGFR-1 siRNA on Notch-induced HUVEC undergoing morphological changes. (G, H) Ad-VEGF-A (VEGF) HUVEC were transfected with 200 pmol of control (CT) or VEGFR-2 siRNA and cultured on collagen gels for three days. (G) Ad-VEGF HUVEC underwent morphological changes with control siRNA. (H) VEGFR-2 siRNA suppressed Ad-VEGF HUVEC morphological changes. (I) Quantification of the effect of 200 pmol VEGFR-2 siRNA on VEGF-A or Notch-induced morphological changes. VEGFR-2 siRNA only modestly affected Ad-N11C HUVEC morphogenesis, while it strongly suppressed Ad-VEGF HUVEC morphogenesis. (F, I) Cells with extensions were counted per 10 $\times$  field, for five separate fields. Data is representative of the mean plus or minus SD of three separate experiments. \*  $P < 0.01$  compared with control.

### Expression of VEGFR-1 in neovessels was decreased when Notch signaling is inhibited

The role of Notch in physiological angiogenesis was evaluated using a Dorsal Air Sac (DAS) assay, where a chamber containing VEGF<sup>121</sup>-expressing pancreatic KP1 tumor cells (KP1/VEGF<sup>121</sup>) is implanted under the dorsal skin of a mouse and the overlying dermis evaluated for ingrowth of vessels [31]. In this assay, we used a protein-based inhibitor of Notch signaling that encodes the extracellular EGF-like repeat domain of Notch1 fused to the human Fc domain, which we call the 'Notch1 decoy' [27]. We have shown that angiogenesis is induced in the smooth muscle layer of the skin overlying the KP1/VEGF<sup>121</sup> chamber, but is inhibited when KP1/VEGF<sup>121</sup> cells also express the Notch1 decoy via adenoviral transduction (Ad-Notch1 decoy) as compared to control (Ad-GFP) [27]. Thus, in this assay, VEGF<sup>121</sup>-induced angiogenesis was dependent on Notch signaling [27]. To evaluate endothelial VEGFR-1 and VEGFR-2 expression, cross sections of skin from the DAS assay were immunostained with antibodies against VEGFR-1, VEGFR-2 or CD31. Both VEGFR-1 and VEGFR-2 were expressed in the neovessels of control KP1/VEGF<sup>121</sup> implants transduced with Ad-

GFP (Figure 4A-B). VEGFR-2 staining was detected in implants transduced with the Notch1 decoy, though its expression was decreased, reflecting a decrease in vessel density (Figure 4C, black arrowheads). However, expression of VEGFR-1 in Notch1 decoy-expressing implants was significantly reduced compared to control, and seen only faintly in the smooth muscle cell layer (Figure 4D, open arrowheads). To normalize for decreased vessel density in implants expressing the Notch1 decoy, the intensity of VEGFR-1 and VEGFR-2 signals was compared to that of the endothelial cell marker CD31 by quantitative analysis of immunohistochemical signal for each antibody (Figure 4E). While VEGFR-2 expression was decreased in the Notch1 decoy-expressing implant to the same extent as CD31 (36% and 35% of Ad-GFP implants, respectively), VEGFR-1 expression was decreased by a greater extent than either VEGFR-2 or CD31 (14% of control). This suggests that expression of the Notch1 decoy in KP1/VEGF<sup>121</sup> cells reduced vessel number, but not VEGFR-2 expression in endothelial cells, whereas the decrease in VEGFR-1 expression was independent of the decrease in vessel number. Thus, in VEGF-induced neovascularization, VEGFR-1 expression is dependent on Notch signaling.



**Figure 4**

#### Figure 4 caption

Inhibition of Notch signaling decreased VEGFR-1 expression in neovessels. Chambers packed with VEGF-expressing KP1 pancreatic tumor cells (KP1/VEGF-A) transduced with either Ad-GFP or Ad-Notch1 decoy were implanted under the dorsal skin of wild-type C57BL/6 mice. Four days after implantation, chambers were removed for immunohistochemistry of the overlying skin. Representative pictures are shown (20× magnification). (A-B) VEGFR-1 and VEGFR-2 expression in the smooth muscle cell layer of the skin overlying implants expressing Ad-GFP. (C) Expression of VEGFR-2 was detected in implants expressing the Notch1 decoy despite decreased vessel density (black arrowheads). (D) Expression of VEGFR-1 in implants expressing the Notch1 decoy was significantly reduced in the smooth muscle cell layer (open arrowheads). (E) Reduced VEGFR-1 expression relative to CD31 and VEGFR-2 was observed in skin overlying implants expressing the Notch1 decoy compared to those expressing Ad-GFP. Quantitative analysis of immunostaining intensity for each antibody, relative to Ad-GFP implants (set at 100%), was determined in five different areas of each sample. The average density ratio was determined by dividing the area of staining by the total area of the smooth muscle layer. Each group (Ad-GFP versus Ad-Notch1 decoy) consisted of 3-5 mice, and experiments were done in triplicate. Data represents the mean staining intensity in Notch1 decoy implants, expressed as percent of control staining, plus or minus SD. \*  $P < 0.05$ . (F) Notch1 decoy expression in HUVEC reduced VEGF-induced VEGFR-1 expression. Adenovirus transduction of VEGF-A in HUVEC increased the expression of VEGFR-1 and VEGFR-2 as determined by RT-PCR (25 cycles) compared to control (Ad-LacZ) cells. When Ad-VEGF-A (VEGF) HUVEC were co-transduced with the Notch1 decoy, transcript levels of VEGFR-1 were reduced, while VEGFR-2 was unaffected. (G) Gamma secretase inhibitor (GSI) reduces VEGF-induced surface expression of VEGFR-1 in HUVEC. Stimulation of HUVEC with 50 ng/ml VEGF-A induced surface expression of VEGFR-1 (red) compared to control cells (black). Co-incubation with GSI (Compound E) inhibited the VEGF-A-induction of VEGFR-1 (green). 10,000 cells per experimental group were examined by FACs.

This regulation was also found in cultured HUVEC, where VEGF-A-induced expression of VEGFR-1 was reduced by co-expression of the Notch1 decoy, as shown by RT-PCR (Figure 4E). In contrast, induction of VEGFR-2 by VEGF-A in HUVEC was unaffected by the Notch1 decoy (Figure 4F). Similarly, VEGFR-1 expression on the surface of VEGF-A-treated HUVEC was suppressed by treatment with a gamma secretase inhibitor (GSI), Compound E, as analyzed

by flow cytometry (Figure 4G). Thus, two means of Notch inhibition were used to establish that VEGF-A induces Notch signaling which in turn regulates VEGFR-1 and that this regulatory pathway is active in both cultured endothelial cells and neovessels in mice.

## Discussion

Our results show that VEGFR-1 is downstream of Notch1 signaling in endothelial cells. We identify a positive role for Notch signaling in endothelial morphogenesis via the induction of cellular extensions mediated by VEGFR-1. Supporting this conclusion is the observation that Notch increases VEGFR-1 levels and this increase correlated with increased endothelial responsiveness to the VEGFR-1-specific ligand, PlGF. Using a protein-based Notch inhibitor, Notch1 decoy, or a gamma secretase inhibitor, we demonstrate that perturbation of endogenous Notch signaling resulted in reduced VEGFR-1 expression. Thus, loss- and gain- of function studies show that Notch signaling regulates VEGFR-1 expression in HUVEC and dermal neovessels.

Previous studies have demonstrated a role for the Notch ligand, Dll4, in inhibiting a tip cell phenotype in the developing vasculature of the retina [16, 17]. In addition, Harrington et al [24] have shown that VEGFR-1 is upregulated by Dll4, and demonstrated

that Dll4 signaling inhibited sprout length in a HUVEC tubulogenesis assay. The authors suggest that Dll4 signaling inhibits angiogenesis by inducing VEGFR-1 [24]. In summary, previous studies have found a negative role for Notch signaling in endothelial cell sprouting, and have focused on this signaling pathway at the level of the ligand, Dll4. However, in these studies, the Notch receptor responsible for these effects is not defined and the possibility of divergent effects of different Notch receptors is not addressed. By focusing on the effects of Notch signaling at the level of the receptor, our results add new insights to the role of Notch and VEGFR-1 in sprouting angiogenesis. In contrast to previous studies, our data suggest that in some settings, Notch signaling may play a positive role in endothelial cell extension of filopodia-like structures via its regulation of VEGFR-1 and supports a novel role Notch1-mediated regulation of VEGFR-1 in endothelial cell morphogenesis.

It has recently been found that VEGFR-1 promotes

vascular sprout formation and branching morphogenesis [35, 36]. Kearney et al [35] propose that this results from VEGFR-1 binding to VEGF-A, thereby regulating the amount of VEGF-A that is available to interact with VEGFR-2. They also show that soluble VEGFR-1 (sVEGFR-1) can promote sprout formation and migration. The positive effect of Notch signaling on HUVEC sprouting that we report may therefore be due to its effect on VEGFR-1, and subsequently, on local levels and availability of VEGF-A. This may particularly be the case if the predominant effect of Notch signaling is due to regulation of sVEGFR-1. In general, the relative proportion of the membrane bound and secreted isoform of VEGFR-1 does not change significantly (data not shown, and Kappas et al [36]), therefore, we cannot entirely exclude the possibility that Notch-induced sprouting in HUVEC is due to sequestration of VEGF-A. However, we show that Notch-induced sprouting in HUVEC is enhanced in the presence of PlGF, a VEGFR-1 specific ligand, suggesting that signaling through the VEGFR-1 receptor itself, and not simply its function as a 'VEGF-A sink,' may be responsible for Notch-mediated sprouting. This is further supported by the fact that VEGFR-1 siRNA inhibited Notch-induced sprouting in HUVEC while VEGFR-2 siRNA had only a modest effect. Thus, our data support the conclusion that activation of Notch signaling in HUVEC can induce extensions via VEGFR-1, and highlight the possibility that Notch signaling may act through VEGFR-1 to have a positive effect on endothelial cell morphogenesis.

It has been reported that inhibition of VEGFR-1 in the developing retina does not effect sprouting and filopodia extensions in endothelial cells [3, 16]. In the retina, endothelial tip cell filopodia are guided by a gradient of VEGF-A provided by a template of astrocytes [3, 37]. However, in our model of *in vitro* sprouting in HUVEC, as well as in many *in vivo* settings of physiological and pathological angiogenesis, the source of VEGF-A is likely to be more diffuse. Notch-mediated sprouting via regulation of VEGFR-1 may constitute a mechanism for endothelial cell morphogenesis that is important in settings where Notch1 is highly expressed in the vasculature and where expression of VEGF-A is more global, and endothelial cell sprouting less controlled, than in formation of the retinal plexus. In addition, our finding that Notch-induced sprouting in endothelial cells is enhanced by PlGF may be relevant in angiogenic settings where PlGF is a major angiogenic factor. Since PlGF is upregulated in pathological conditions by various stimuli [38-40], and contributes to the angiogenic switch in various pathologies [6, 41, 42], Notch-mediated upregulation of VEGFR-1 may prove an important step in disease progression in these contexts. Furthermore, our finding that blockade of Notch signaling using a protein-based inhibitor of Notch1 (Notch1 decoy) resulted in decreased expression of VEGFR-1 in an *in vivo* model of angiogenesis may have important implications for the efficacy of inhibition of Notch signaling in settings where VEGFR-1 expression is prominent, such as in certain tumor types and in the initiation of premetastatic niches [43-45].

## Acknowledgements

This work was supported by the following grants from the National Institutes of Health: (R01HL62454, R01CA136673) (JK),

(F31HL090032-01) (HHO), (5K01DK744629, R01CA136673) (CJS), (5T32 DK07328)(MV).

## Authors' original submitted files for images

Below are the links to the authors' original submitted files for images.

Authors' original file for figure 1  
[Click here to view.](#)

Authors' original file for figure 2  
[Click here to view.](#)

Authors' original file for figure 3  
[Click here to view.](#)

Authors' original file for figure 4  
[Click here to view.](#)

## References

1. Carmeliet P, Ferreira V, Breier G, Pollefeyt S, Kieckens L, Gertsenstein M, Fahrig M, Vandenhoek A, Harpal K, Eberhardt C, et al. Abnormal blood vessel development and lethality in embryos lacking a single VEGF allele. *Nature*. 1996;380:435-439.
2. Matsumoto T, Claesson-Welsh L. VEGF receptor signal transduction. *Sci STKE*. 2001;2001:RE21-.
3. Gerhardt H, Golding M, Fruttiger M, Ruhrberg C, Lundkvist A, Abramsson A, Jeltsch M, Mitchell C, Alitalo K, Shima D, Betsholtz C. VEGF guides angiogenic sprouting utilizing endothelial tip cell filopodia. *J Cell Biol*. 2003;161:1163-1177.
4. Ferrara N, Davis-Smyth T. The biology of vascular endothelial growth factor. *Endocr Rev*. 1997;18:4-25.



5. Fischer C, Jonckx B, Mazzone M, Zacchigna S, Loges S, Pattarini L, Chorianopoulos E, Liesenborghs L, Koch M, De Mol M, et al. Anti-PIGF inhibits growth of VEGF(R)-inhibitor-resistant tumors without affecting healthy vessels. *Cell*. 2007;131:463-475.
6. Carmeliet P, Moons L, Luttun A, Vincenti V, Compernelle V, De Mol M, Wu Y, Bono F, Devy L, Beck H, et al. Synergism between vascular endothelial growth factor and placental growth factor contributes to angiogenesis and plasma extravasation in pathological conditions. *Nat Med*. 2001;7:575-583.
7. Barleon B, Sozzani S, Zhou D, Weich HA, Mantovani A, Marme D. Migration of human monocytes in response to vascular endothelial growth factor (VEGF) is mediated via the VEGF receptor flt-1. *Blood*. 1996;87:3336-3343.
8. Fischer C, Mazzone M, Jonckx B, Carmeliet P. FLT1 and its ligands VEGFB and PIGF: drug targets for anti-angiogenic therapy?. *Nat Rev Cancer*. 2008;8:942-956.
9. Hiratsuka S, Minowa O, Kuno J, Noda T, Shibuya M. Flt-1 lacking the tyrosine kinase domain is sufficient for normal development and angiogenesis in mice. *Proc Natl Acad Sci USA*. 1998;95:9349-9354.
10. Waltenberger J, Claesson-Welsh L, Siegbahn A, Shibuya M, Heldin CH. Different signal transduction properties of KDR and Flt1, two receptors for vascular endothelial growth factor. *J Biol Chem*. 1994;269:26988-26995.
11. Ferrara N. Role of vascular endothelial growth factor in regulation of physiological angiogenesis. *Am J Physiol Cell Physiol*. 2001;280:C1358-1366.
12. Fong GH, Rossant J, Gertsenstein M, Breitman ML. Role of the Flt-1 receptor tyrosine kinase in regulating the assembly of vascular endothelium. *Nature*. 1995;376:66-70.
13. Hiratsuka S, Maru Y, Okada A, Seiki M, Noda T, Shibuya M. Involvement of Flt-1 tyrosine kinase (vascular endothelial growth factor receptor-1) in pathological angiogenesis. *Cancer Res*. 2001;61:1207-1213.
14. Hiratsuka S, Nakamura K, Iwai S, Murakami M, Itoh T, Kijima H, Shipley JM, Senior RM, Shibuya M. MMP9 induction by vascular endothelial growth factor receptor-1 is involved in lung-specific metastasis. *Cancer Cell*. 2002;2:289-300.
15. Kami J, Muranaka K, Yanagi Y, Obata R, Tamaki Y, Shibuya M. Inhibition of choroidal neovascularization by blocking vascular endothelial growth factor receptor tyrosine kinase. *Jpn J Ophthalmol*. 2008;52:91-98.
16. Suchting S, Freitas C, le Noble F, Benedito R, Breant C, Duarte A, Eichmann A. The Notch ligand Delta-like 4 negatively regulates endothelial tip cell formation and vessel branching. *Proc Natl Acad Sci USA*. 2007;104:3225-3230.
17. Hellstrom M, Phng LK, Hofmann JJ, Wallgard E, Coultas L, Lindblom P, Alva J, Nilsson AK, Karlsson L, Gaiano N, et al. Dll4 signalling through Notch1 regulates formation of tip cells during angiogenesis. *Nature*. 2007;445:776-780.
18. Lawson ND, Scheer N, Pham VN, Kim CH, Chitnis AB, Campos-Ortega JA, Weinstein BM. Notch signaling is required for arterial-venous differentiation during embryonic vascular development. *Development*. 2001;128:3675-3683.
19. Zhong TP, Childs S, Leu JP, Fishman MC. Gridlock signalling pathway fashions the first embryonic artery. *Nature*. 2001;414:216-220.
20. Taylor KL, Henderson AM, Hughes CC. Notch activation during endothelial cell network formation in vitro targets the basic HLH transcription factor HESR-1 and downregulates VEGFR-2/KDR expression. *Microvasc Res*. 2002;64:372-383.
21. Williams CK, Li JL, Murga M, Harris AL, Tosato G. Up-regulation of the Notch ligand Delta-like 4 inhibits VEGF-induced endothelial cell function. *Blood*. 2006;107:931-939.
22. Ridgway J, Zhang G, Wu Y, Stawicki S, Liang WC, Chantry Y, Kowalski J, Watts RJ, Callahan C, Kasman I, et al. Inhibition of Dll4 signalling inhibits tumour growth by deregulating angiogenesis. *Nature*. 2006;444:1083-1087.
23. Li JL, Sainson RC, Shi W, Leek R, Harrington LS, Preusser M, Biswas S, Turley H, Heikamp E, Hainfellner JA, Harris AL. Delta-like 4 Notch ligand regulates tumor angiogenesis, improves tumor vascular function, and promotes tumor growth in vivo. *Cancer Res*. 2007;67:11244-11253.
24. Harrington LS, Sainson RC, Williams CK, Taylor JM, Shi W, Li JL, Harris AL. Regulation of multiple angiogenic pathways by Dll4 and Notch in human umbilical vein endothelial cells. *Microvasc Res*. 2008;75:144-154.
25. Rangarajan A, Talora C, Okuyama R, Nicolas M, Mammucari C, Oh H, Aster JC, Krishna S, Metzger D, Chambon P, et al. Notch signaling is a direct determinant of keratinocyte growth arrest and entry into differentiation. *EMBO J*. 2001;20:3427-3436.
26. Hardy S, Kitamura M, Harris-Stansil T, Dai Y, Phipps ML. Construction of adenovirus vectors through Cre-lox recombination. *J Virol*. 1997;71:1842-1849.
27. Funahashi Y, Hernandez SL, Das I, Ahn A, Huang J, Vorontchikhina M, Sharma A, Kanamaru E, Borisenko V, Desilva DM, et al. A notch1 ectodomain construct inhibits endothelial notch signaling, tumor growth, and angiogenesis. *Cancer Res*. 2008;68:4727-4735.
28. Jaffe EA, Nachman RL, Becker CG, Minick CR. Culture of human endothelial cells derived from umbilical veins. Identification by morphologic and immunologic criteria. *J Clin*

- Invest. 1973;52:2745-2756.
29. Shawber CJ, Funahashi Y, Francisco E, Vorontchikhina M, Kitamura Y, Stowell SA, Borisenko V, Feirt N, Podgrabska S, Shiraishi K, et al. Notch alters VEGF responsiveness in human and murine endothelial cells by direct regulation of VEGFR-3 expression. *J Clin Invest.* 2007;117:3369-3382.
  30. Das I, Craig C, Funahashi Y, Jung KM, Kim TW, Byers R, Weng AP, Kutok JL, Aster JC, Kitajewski J. Notch oncoproteins depend on gamma-secretase/presenilin activity for processing and function. *J Biol Chem.* 2004;279:30771-30780.
  31. Funahashi Y, Wakabayashi T, Semba T, Sonoda J, Kitoh K, Yoshimatsu K. Establishment of a quantitative mouse dorsal air sac model and its application to evaluate a new angiogenesis inhibitor. *Oncol Res.* 1999;11:319-329.
  32. Vorontchikhina MA, Zimmermann RC, Shawber CJ, Tang H, Kitajewski J. Unique patterns of Notch1, Notch4 and Jagged1 expression in ovarian vessels during folliculogenesis and corpus luteum formation. *Gene Expr Patterns.* 2005;5:701-709.
  33. Park JE, Chen HH, Winer J, Houck KA, Ferrara N. Placenta growth factor. Potentiation of vascular endothelial growth factor bioactivity, in vitro and in vivo, and high affinity binding to Flt-1 but not to Flk-1/KDR. *J Biol Chem.* 1994;269:25646-25654.
  34. Autiero M, Waltenberger J, Communi D, Kranz A, Moons L, Lambrechts D, Kroll J, Plaisance S, De Mol M, Bono F, et al. Role of PlGF in the intra- and intermolecular cross talk between the VEGF receptors Flt1 and Flk1. *Nat Med.* 2003;9:936-943.
  35. Kearney JB, Kappas NC, Ellerstrom C, DiPaola FW, Bautch VL. The VEGF receptor flt-1 (VEGFR-1) is a positive modulator of vascular sprout formation and branching morphogenesis. *Blood.* 2004;103:4527-4535.
  36. Kappas NC, Zeng G, Chappell JC, Kearney JB, Hazarika S, Kallianos KG, Patterson C, Annex BH, Bautch VL. The VEGF receptor Flt-1 spatially modulates Flk-1 signaling and blood vessel branching. *J Cell Biol.* 2008;181:847-858.
  37. Fruttiger M. Development of the mouse retinal vasculature: angiogenesis versus vasculogenesis. *Invest Ophthalmol Vis Sci.* 2002;43:522-527.
  38. Yao YG, Yang HS, Cao Z, Danielsson J, Duh EJ. Upregulation of placental growth factor by vascular endothelial growth factor via a post-transcriptional mechanism. *FEBS Lett.* 2005;579:1227-1234.
  39. Green CJ, Lichtlen P, Huynh NT, Yanovsky M, Laderoute KR, Schaffner W, Murphy BJ. Placenta growth factor gene expression is induced by hypoxia in fibroblasts: a central role for metal transcription factor-1. *Cancer Res.* 2001;61:2696-2703.
  40. Mohammed KA, Nasreen N, Tepper RS, Antony VB. Cyclic stretch induces PlGF expression in bronchial airway epithelial cells via nitric oxide release. *Am J Physiol Lung Cell Mol Physiol.* 2007;292:L559-566.
  41. Rakic JM, Lambert V, Devy L, Luttun A, Carmeliet P, Claes C, Nguyen L, Foidart JM, Noel A, Munaut C. Placental growth factor, a member of the VEGF family, contributes to the development of choroidal neovascularization. *Invest Ophthalmol Vis Sci.* 2003;44:3186-3193.
  42. Gigante B, Morlino G, Gentile MT, Persico MG, De Falco S. Plgf-/-eNos-/- mice show defective angiogenesis associated with increased oxidative stress in response to tissue ischemia. *FASEB J.* 2006;20:970-972.
  43. Lyden D, Hattori K, Dias S, Costa C, Blaikie P, Butros L, Chadburn A, Heissig B, Marks W, Witte L, et al. Impaired recruitment of bone-marrow-derived endothelial and hematopoietic precursor cells blocks tumor angiogenesis and growth. *Nat Med.* 2001;7:1194-1201.
  44. Luttun A, Tjwa M, Carmeliet P. Placental growth factor (PlGF) and its receptor Flt-1 (VEGFR-1): novel therapeutic targets for angiogenic disorders. *Ann N Y Acad Sci.* 2002;979:80-93.
  45. Kaplan RN, Riba RD, Zacharoulis S, Bramley AH, Vincent L, Costa C, MacDonald DD, Jin DK, Shido K, Kerns SA, et al. VEGFR1-positive haematopoietic bone marrow progenitors initiate the pre-metastatic niche. *Nature.* 2005;438:820-827.

## Copyright & License

*Statement:* Copyright © 2010, Funahashi et al.

*Holder:* Funahashi et al

*Licensee:* Publiverse Online S.R.L.

**License: Open Access** This article is distributed under the terms of the Creative Commons Attribution 4.0 International License (<http://creativecommons.org/licenses/by/4.0/>), which permits unrestricted use, distribution, and reproduction in any medium, provided you give appropriate credit to the original author(s) and the source, provide a link to the Creative Commons license, and indicate if changes were made. The Creative Commons Public Domain Dedication waiver (<http://creativecommons.org/publicdomain/zero/1.0/>) applies to the data made available in this article, unless otherwise stated.



The present article has been published in Vascular Cell journal by Publiverse Online S.R.L.