

Angiogenic efficacy of Heparin on chick chorioallantoic membrane

Reji Bhuvanendran Rema, ¹ Karthick Rajendran, ¹ Malathi Ragunathan, ¹, c. @
@ corresponding author, & equal contributor

Vascular Cell. 2012; **4**(1):8 | © Rema et al

Received: 27 September 2011 | Accepted: 15 March 2012 | Published: 18 April 2012

Vascular Cell ISSN: 2045-824X

DOI: <https://doi.org/10.1186/2045-824X-4-8>

Author information

1. Department of Genetics, Dr. ALM PG IBMS - University of Madras; Chennai, Tamil Nadu 600 113, India

[c] r_malathi@hotmail.com

Abstract

Heparin is an anticoagulant agent known to have diverse effects on angiogenesis with some reports suggesting that it can induce angiogenesis while a few have indicated of its inhibitory property. Cancer patients treated for venous thromboembolism with low molecular heparin had a better survival than the unfractionated heparin (UFH). Heparin is known to interact with various angiogenic growth factors based on its sulfation modifications within the glycosaminoglycan chains. Therefore it is important to study the mechanism of action of heparin of different molecular weight to understand its angiogenic property. In this concern, we examined the angiogenic response of higher molecular weight Heparin (15 kDa) of different concentrations using late CAM assay. Growth of blood vessels in terms of their length and size was measured and thickness of the CAM was calculated morphometrically. The observed increase in the thickness of the CAM is suggestive of the formation of capillary like structures at the treated region. Analysis of the diffusion pattern showed internalized action of heparin that could affect gene expression leading to proliferation of endothelial cells. Angiogenesis refers to formation of new blood vessels from the existing ones and occurrence of new blood vessels at the treated area strongly confirms that heparin of 15 kDa molecular weight has the ability to induce angiogenesis on CAM vascular bed in a dose dependent manner. The results demonstrate the affinity of heparin to induce angiogenesis and provide a novel mechanism by which heparin could be used in therapeutics such as in wound healing process.

Keywords

Heparin — Angiogenesis — Chorioallantoic Membrane (CAM) — Endothelial cells (ECs)

Background

Heparin, a member of the glycosaminoglycan family of carbohydrates found on the cell surface and in the extracellular matrix [1] has the potential to induce angiogenesis [2, 3]. It was shown to bind both with angiogenic [4] and anti-angiogenic proteins favoring and stabilizing the association with their respective receptors [5]. Heparin present at the basal site of blood vessels act as matrix receptors by interacting with a variety of basement membrane proteins and is involved in the binding and internalization of lipoprotein lipase on endothelium [6]. Heparin present in the extra cellular matrix (ECM) may act as a reservoir for angiogenic growth factors and will sustain the long-term stimulation of endothelial cells [7]. It was already shown that heparin of different molecular

weight could promote angiogenesis [8] on the chorioallantoic membrane of the chick embryo and introduction of heparin directly into the allantoic sac of CAM [9] resulted in dilated sinuous arterial and venous branches suggesting that heparin could induce new blood vessel formation. Poly-l-lysine/heparin complexes were found to stimulate angiogenesis in chick embryo chorioallantoic membrane [10].

We analyzed the angiogenic effect of Heparin (15 kDa) by treating CAM with 3 different concentrations (50, 100 and 150 μ M) using gelatin sponges after 72 hours of incubation. Biotinylated Heparin contains 5–8 mole-percent biotin and is attached through a 12-atom spacer arm containing a cleavable disulfide group. This has been used

mainly to study its localization on CAM using streptavidin labeled with HRP.

Diffusion of Heparin through various layers of CAM and also the morphological changes induced on CAM during treatment was analysed. Thickness of the CAM was also measured to further substantiate the angiogenic response and formation of new blood vessels. *Angioquant* software was used to measure the growth of the vessels by modifying the

macroscopic images taken during treatment period. This software is specially made for quantifying angiogenesis using *in vitro* assays and has been employed for CAM with some modifications. The results obtained using morphometry and immunostaining of 15 kDa heparin might be of therapeutic significance in angiogenic disorders that requires neovascularisation.

Materials and Methods

Materials

Fertilized White leghorn chicken eggs (*Gallus gallus*) were purchased from, Tamil Nadu Poultry Research Station, Madras Veterinary University, Nandanam, Chennai, India. Gelatin sponges were from Jhonson & Jhonson Pvt Ltd, Heparin from CALBIOCHEM, USA (Product No. 375054), HRP conjugated streptavidin (HRP-anti-rabbit secondary) from Bangalore Genei, India, Phosphate buffered solution and other common reagents were purchased from Sigma, Aldrich, USA.

Methods

The *in ovo* CAM model

Fertilized chicken eggs weighing 50 ± 2 gm were incubated at 37°C in a humidified atmosphere ($>60\%$ relative humidity) based on protocol for the Hen's Egg Test-Chorioallantoic Membrane (HET-CAM) method. At day 3 of post incubation, 2 to 3 ml of albumin was withdrawn, using a 21-gauge needle, through the large blunt edge of the egg in order to minimize adhesion of the shell membrane with CAM. A square window of 1 cm^2 was opened in the egg shell and sealed with paraffin film to prevent dehydration and the eggs were returned for incubation. On day 9th, gelatin sponges of size of 1 mm^3 were placed on the top of growing CAM under sterile condition [11]. The sponges were soaked with $10\text{ }\mu\text{l}$ of 50, 100 and $150\text{ }\mu\text{M}$ concentrations of heparin. Control CAM was treated with $10\text{ }\mu\text{l}$ of 1X PBS. The window was closed with a transparent adhesive tape and the eggs were returned for further incubation till day 12 (72 hours) at which vascularization potential of the CAM reaches its maximum. The experimental groups were divided into 4 with each containing 40 numbers. Group 1 represents 1X PBS (control), group 2, 3 and 4 corresponds to $10\text{ }\mu\text{l}$ of $50\text{ }\mu\text{M}$, $100\text{ }\mu\text{M}$ and $150\text{ }\mu\text{M}$ of heparin. Treated CAM was photographed at 0, 24, 48 and 72 hours using Cannon digital camera and the images were analyzed with *Angioquant* Toolbox, MATLAB 6.5 software to measure total length and size of blood vessels in micrometer at the area of treatment [12-14].

Histology

CAM treated with heparin was flooded with Bouin's fixative solution and the treated area was removed, dehydrated and embedded in paraffin wax. Vertical cross sections of $7\text{ }\mu\text{m}$ in thickness were taken using Rotary Microtome (Weswicox, Japan) [15]. The histological sections were observed under Light Microscope at 40X magnification for qualitative assessment and images were taken using Nikon Camera attached with light microscope at 10X magnification.

Morphometric analysis

Thickness of the CAM was measured from haematoxylin and eosin stained sections with a calibrated objective at 40X magnification using 10×10 calibrated grids in the 10X ocular. Each CAM was measured at 6 different locations from 6 serial cross sections of the same sample. To calculate mean tissue thickness (DCAM) all of the representative sections from the particular tissue sample were measured in micrometer and averaged to yield a mean CAM thickness [15].

Immunohistochemical analysis

Sections of CAM of $7\text{ }\mu\text{m}$ thickness were obtained using microtome after treatment with heparin. After 12 hours of incubation at 37°C the sections were dewaxed. Sections were washed with 1X PBS and incubated with HRP conjugated streptavidin (HRP-anti-rabbit secondary) of 1:40 dilution for 1 hour at 37°C . After counterstaining with haematoxylin and eosin dehydration was performed with alcohol. Images were recorded after mounting with 90% of glycerol using Nikon camera attached with light microscope at 40X magnification. Immunohistochemical staining was performed on paraffin-embedded tissue sections with slight modifications.

Data analysis and statistics

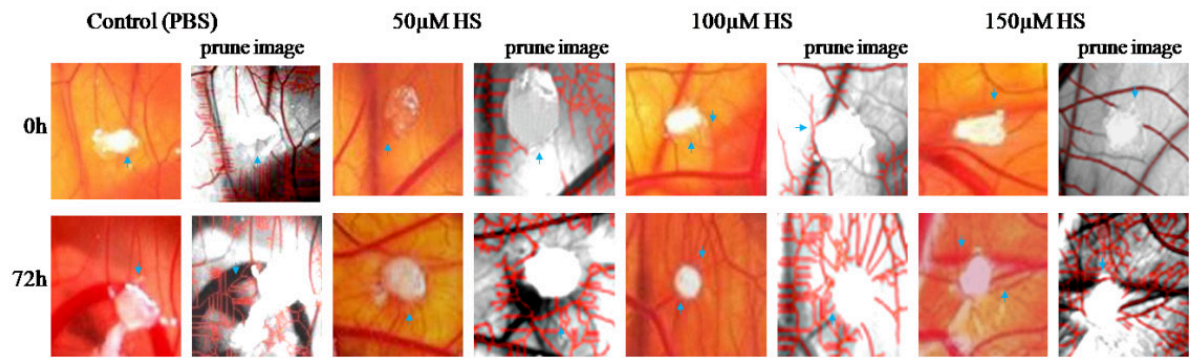
All the experiments were performed in triplicate ($n = 3$) unless otherwise specified. Data are presented as mean \pm SEM and were analyzed by One-Way ANOVA analysis of variance test, Student's *t*-test and Tukey post hoc tests as appropriate by Sigma Stat 2.0. $p < 0.001$ and $p = 0.001$ were considered as statistically significant.

Results

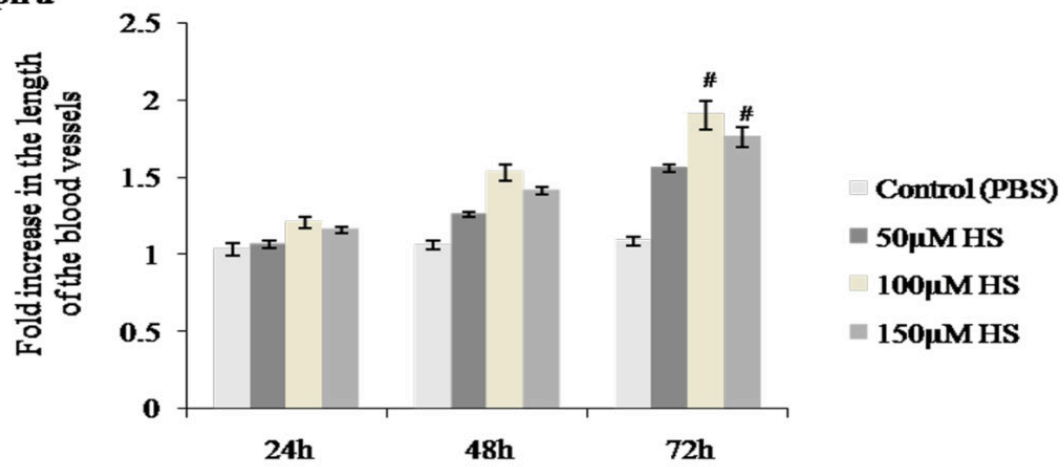
Visualization of blood vessels on CAM

We studied the role of heparin in the angiogenic process by performing a CAM assay. An increase in the number of blood vessels was observed for all 3 concentrations (50,100,150 μ M) of heparin at 72hours of treatment. Among three concentrations 100 μ M heparin showed distinct spoke wheel pattern of vessels with numerous allantoic vessels around the gelatin sponge demonstrating the angiogenic potential of heparin while control CAM treated with PBS showed slow and steady growth of allantoic vessels (Figure 1a). The observation is

also supported by the skeletonized prune images obtained from *Angioquant* software (Figure 1a). Angiogenic potential of heparin was further analysed by measuring the growth of the vessels with respect to their length and size and confirmed at various time points of incubation namely at 24, 48 and 72hours of treatment (Figure 1b). A significant increase in the vessel length ($\#p = 0.001$) and size ($*p = <0.001$) was observed on CAM treated with 100 and 150 μ M concentrations of heparin with 100 μ M exhibiting maximum angiogenic response.



Graph a



Graph b

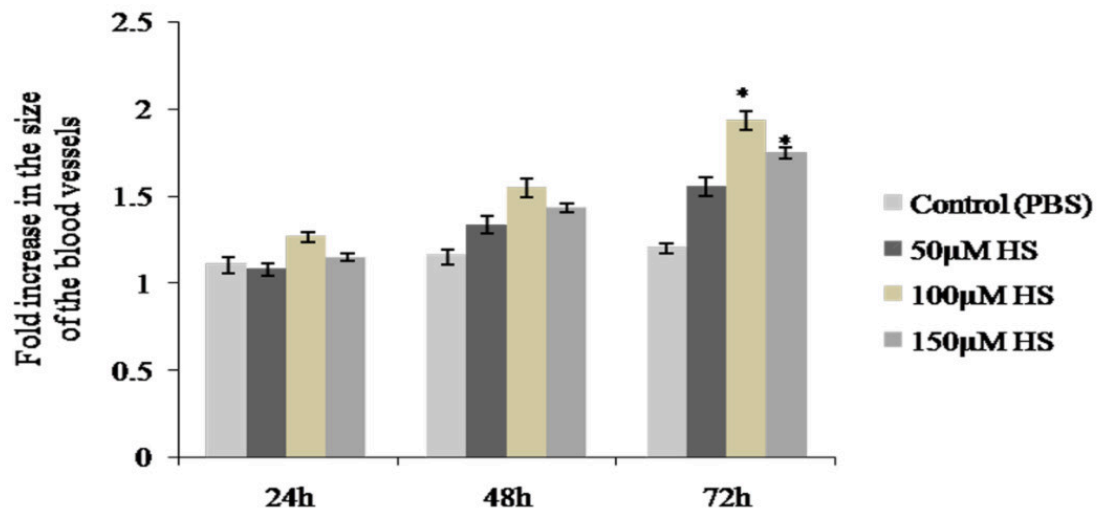


Figure 1

Figure 1 caption

a. Effect of biotin conjugated heparin on late CAM. Images of late CAM treated with 50, 100 and 150 μ M heparin. Control CAM was treated with 1X PBS. CAM treated with 100 μ M heparin shows increased vascularization around the sponge as spoke wheel pattern which is comparatively higher than other concentrations and is also supported by skeletonized prune images by software. Images are taken using Canon digital camera at 4X magnification and are the result of 3 different set of experiments. Arrow indicates the presence of blood vessels. 1b. Effect of biotin conjugated heparin on the growth of blood vessels on late CAM. Total length and size of the blood vessels was measured using software after treating CAM with 50, 100 and 150 μ M heparin. Control CAM was treated with 1X PBS. Images recorded at 0, 24, 48 and 72hours were analyzed individually. Values at 0hour were taken as one for all. CAM treated with 100 and 150 μ M heparin shows significant increase in vessels length (graph a) and size (graph b) after 72hours of treatment when compared to control. Though both the concentrations shows significant changes, 100 μ M heparin shows comparatively higher angiogenic potential. Experiments were performed in triplicate and data presented as mean \pm SEM, #p = 0.001 and *p = <0.001 versus control.

Qualitative assessment of angiogenic potential

We further demonstrated the angiogenic potential of heparin by studying the morphological features of CAM after treatment (Figure 2). CAM treated with PBS showed uniform tissue thickness without any bulging appearance. Large blood vessel was seen without the appearance of sprouts. The histological appearance was same throughout the chorionic and allantoic epithelial layers. CAM treated with 100 μ M heparin showed increased thickness at the thin stratum due to altered fibroblast, epithelial and endothelial cellular morphology. Large numbers of elongated ECs were visible with sprouting appearance. The thickness of the primary stratum

also increased due to accumulation of fibroblast at sub-epithelial capillary network (SEC) giving an irregular appearance. Very small capillaries were visible at the connective tissue area due to occasional sprouting from pre existing vessels which tends to pass to the chorionic sinus and could be concluded as the sprouting angiogenic effect at this particular concentration. CAM treated with 50 μ M and 150 μ M heparin showed irregular appearance of thin stratum at chorionic epithelial layer due to stratification of the cells mainly by fibroblast cells at SEC. A few small capillaries were also visible for 150 μ M but radial pattern of fibroblast was reiterated.

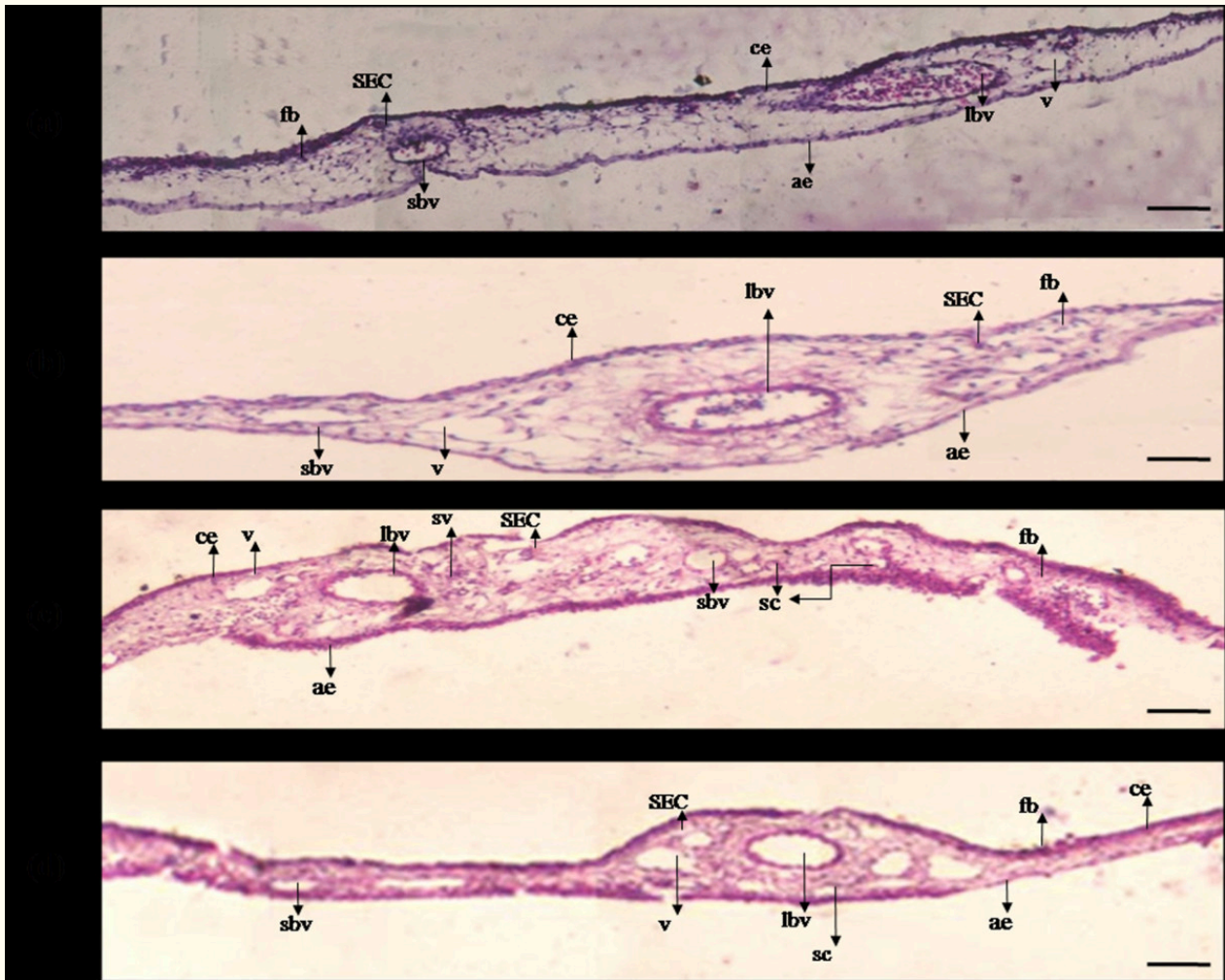


Figure 2

Figure 2 caption

Effect of heparin on CAM morphology. (a) CAM treated with 1X PBS shows thin chorionic (ce) and allantoic (ae) epithelial layer due to minimal accumulation of fibroblast cells (fb) with subepithelial capillary network (SEC) along with the presence of large blood vessels (lbv) and vein (v). (b) CAM treated with 50 μ M heparin shows increased thickness at ce and ae due to fb accumulation along with the presence of small blood vessels (sbv) at stroma region. (c) CAM treated with 100 μ M heparin shows increased thickness at the ae and ce due to increased accumulation of fb with densely packed small blood vessels beneath SEC and also ECs capillary sprouting as small sprouting vessels (sv) which extending towards SEC. Presence of numerous small capillaries (sc) and lbv along with v are also visible at the stroma region. (d) 150 μ M heparin shows diminished fibroblast accumulation at thin stratum and also reiteration of radial arrangement of fb, lbv and sbv are also visible with minimal sprouting of sc. Gelatin sponges did not cause wound or inflammation. Representative tissues are 7 μ m in thickness stained with haematoxylin and eosin and images were taken at 40X magnification and are the result of 3 different set of experiments. Bar is 50 μ m.

Measurement of CAM thickness (DCAM)

Growth of the vessels was further confirmed by measuring the thickness of CAM from paraffin embedded vertical sections and plotted as shown in Figure 3. In paraffin-embedded tissue, material

shrinkage could be estimated to be ~25% relative to the fresh material and can be assumed to be the same since all tissues were prepared similarly [16]. Thus, shrinkage corrections were not necessary for comparisons of tissue thickness. CAM treated with

100 μ M heparin showed significant increase to the values obtained for 50 μ M and 150 μ M concentrations (* p = <0.001) in tissue thickness when compared

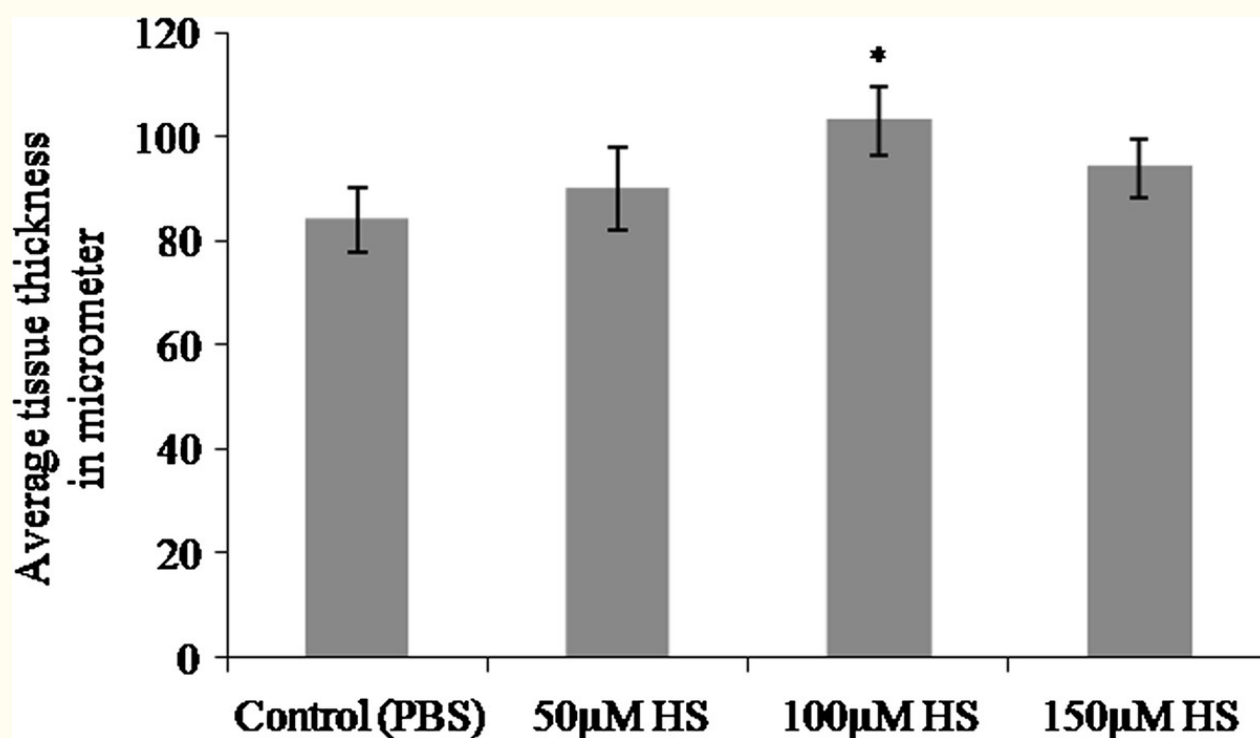


Figure 3

Figure 3 caption

Thickness of CAM treated with heparin. Total thickness of the tissue at the area of treatment was measured from haematoxylin and eosin stained paraffin embedded CAM tissues and plotted. Thickness of the CAM treated with heparin is higher than that of control CAM for 72hours. CAM treated with 100 μ M heparin showed a significant increase in tissue thickness when compared with the other concentrations. Each value is expressed as mean \pm SEM (* p = <0.001 versus control, n = 6).

Diffusion pattern of heparin

Diffusion of biotin conjugated heparin through various membranes of CAM was analyzed based on its binding with streptavidin. The presence of biotin-streptavidin complexes is indicative of the diffusion of heparin (Figure 4) through the membrane and the intensity increased with increase in the concentrations. CAM treated with 50 μ M heparin showed that it had diffused through the chorionic and sub epithelial cell layers and could favor the activation of fibroblast cell. CAM treated

with 100 μ M heparin showed that the diffusion occurred not only at the chorionic and sub epithelial layer but also at the stroma in which are present the capillary plexes/blood sinus. This could favor endothelial cell migration which is considered to be the most important step in angiogenesis. CAM treated with 150 μ M heparin showed that the diffusion is greater at the sub epithelial layer and in stroma region suggesting that heparin (15 KDA) could favor angiogenesis.

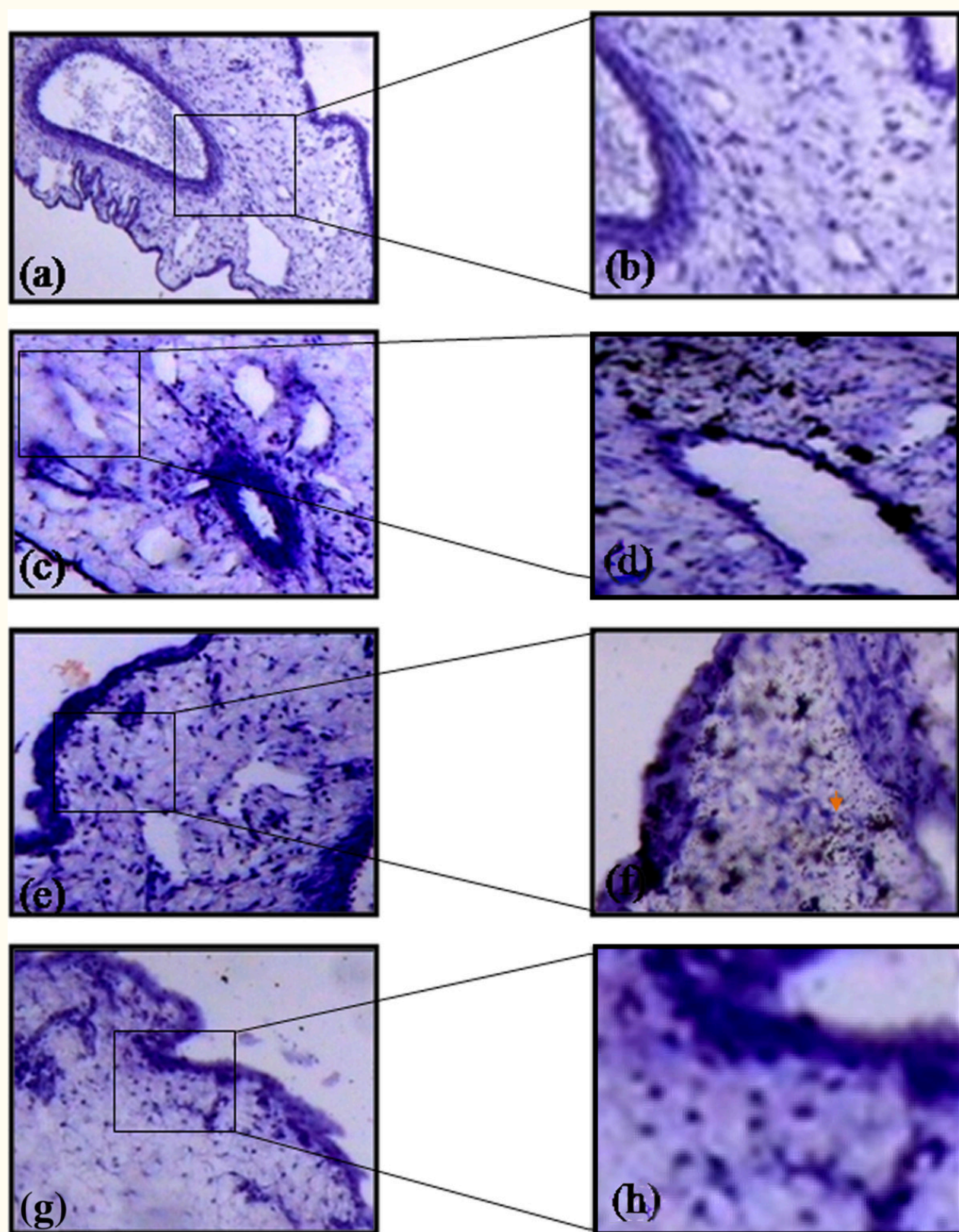


Figure 4

Figure 4 caption

Diffusion pattern of heparin through various layer of CAM. CAM treated 1X PBS doesn't show any diffusion pattern (a) stained without HRP and (b) with HRP. CAM treated with 50 μ M heparin shows diffusion at chorionic (ce) and sub epithelial layers (c) stained without HRP and (d) with HRP. CAM treated with 100 μ M heparin shows diffusion at ce and sub epithelial layers and also at stroma region (e) stained without HRP and (f) with HRP. CAM treated with 150 μ M heparin shows higher intensity of HRP staining due to higher concentration and shows diffusion pattern at ce and sub epithelial layers and also at stroma region (g) stained without HRP and (h) with HRP. Arrow indicates the presence of biotin-streptavidin complex. Magnification for a, c, e and g is 10X and for b, d, f and h is 40X and are the results of 3 different set of experiments. For a, c, e and g bar is 50 μ m and for b, d, f and h bar is 100 μ m.

Discussion

The present study reveals the mechanisms by which heparin of 15 kDa can induce angiogenesis *in vitro*. New blood vessel formation and its growth on CAM treated with heparin of varying concentrations implied that it has the potential to induce sprouting angiogenesis as observed in the increase in vessel length and size. The usage of *Angioquant* software to measure vessel growth *in vivo* is already reported by others. In sprouting angiogenesis activated Endothelial cells (ECs) favor binding of growth factors such as Vascular Endothelial Growth Factor (VEGF) and basic Fibroblast Growth Factor 2 (FGF2) with its specific receptors which could be activated by various external and internal stimulus [17] resulting in the degradation of extra cellular matrix by Matrix Metalloproteases (MMPs) and proliferation of ECs to form immature blood vessels [18]. These immature blood vessels are further stabilized by the recruitment of mural cells which can contribute to the increase in the size of the vessels [19]. It is understood that heparin could interact with these angiogenic growth factors [20, 21] and act as a mitogen for capillary ECs both *in vivo* [22] and *in vitro* [23]. Thus it could be concluded that heparin could induce sprouting angiogenesis on CAM and the growth pattern recorded at different time points showed that its action is dose-dependent with maximum efficacy at 100 μ M after 72 hours of treatment.

It was proved that histology of the CAM changes as a response towards the biological materials placed on it including EC migration [24], fibroblast and mast cell accumulation [25, 26], changes in thickness of the epithelial layer, increase in the number of capillaries and capillary cords formation [15], presence of apoptotic ECs [27–30]. In the present study heparin is found to alter the morphology of those cells which have a direct role in angiogenesis similar to that reported earlier [15]. The histological changes associated with 100 μ M is suggestive of favo-ring blood vessel formation stronger than other two concentrations.

To calculate tissue thickness we measured the distance between chorionic and allantoic layers (in micrometer) that contains different kind of cells and any morphological change found in these cells could affect the entire structure of the CAM. An earlier study showed that angiogenic activity of the substance could be measured by calculating cell density of fibroblast, ECs and epithelial cells [15, 31]. Thickness of the CAM increases gradually during the early and mid phase of embryo growth due to the capillary migration from stroma region towards the inner shell membrane (ISM) [32]. The ISM lies very close to the basal lamina which is the outer surface of the CAM where gelatin sponges soaked with heparin are implanted. The thickness of CAM treated with heparin had increased indicating the proliferation and growth of the blood vessels and can be concluded that heparin has the potential to induce new vessels formation with maximum performance at 100 μ M concentration within 72hours.

It is already known that the angiogenic response of CAM depends on diffusion of test materials through the CAM thereby indicating its involvement in angiogenesis. We studied the diffusion pattern of biotinylated heparin and found that heparin had diffused through various layers of CAM. The affinity of biotin with streptavidin has made it useful for numerous bioanalytical and biotechnological applications [33–35] using CAM and mouse embryo assays [36]. The diffusion pattern showed internalized action of heparin that could affect gene expression on endothelial cell and could stabilize, potentiate and transport growth factors which favor angiogenesis. This diffusion pattern was found to depend on the concentrations and implied the fact that though the higher concentration (150 μ M) could favor new blood vessel formation up to certain extent might cause cellular damage. The diffusion of 100 μ M heparin to the stroma region indicates that it would have a direct impact on angiogenesis and can favor sprouting of blood vessels.

Conclusion

The present study evaluates the effects of HMWH

on formation of capillary-like tubular structures using CAM assay. UFH of 15 kDa enhances its formation in contrast to LMWH which is known to decrease the formation of tubular endothelial structures. Thus the present *in ovo vivo* study has demonstrated that heparin possesses the angiogenesis inducing affinity and is significant at 100 μ M concentration. These data provide a novel mechanism by which higher molecular weight

heparins can promote formation of capillary-like tubular structures and might be of therapeutic significance in inducing angiogenesis during wound healing process while the low molecular weight constituents can be employed to inhibit angiogenesis as in tumor progression.

Acknowledgement

This study was supported by University SAP

sponsored programme and Merit fellowship, University Grant Commission, India.

Authors' original submitted files for images

Below are the links to the authors' original submitted files for images.

Authors' original file for figure 1
[Click here to view.](#)

Authors' original file for figure 2
[Click here to view.](#)

Authors' original file for figure 3
[Click here to view.](#)

Authors' original file for figure 4
[Click here to view.](#)

References

- Berry D, Shriver Z, Natke B, Kwan CP, Venkataraman G, Sasisekharan R. Heparan sulphate glycosaminoglycans derived from endothelial cells and smooth muscle cells differentially modulate fibroblast growth factor-2 biological activity through fibroblast growth factor receptor-1. *Biochem J.* 2003;373:241-249.
- Smorenburg SM, Van Noorden CJ. The complex effects of heparins on cancer progression and metastasis in experimental studies. *Pharmacol Rev.* 2001;53:93-105.
- Pacini S, Gulisano M, Vannucchi S, Ruggiero M. Poly-L-lysine/heparin stimulates angiogenesis in chick embryo chorioallantoic membrane. *Biochem Biophys Res Commun.* 2002;290:820-823.
- Zhang W, Chuang YJ, Swanson R, Li J, Seo K, Leung L, Lau LF, Olson ST. Antiangiogenic antithrombin down-regulates the expression of the proangiogenic heparan sulfate proteoglycan, perlecan, in endothelial cells. *Blood.* 2004;103:1185-1191.
- Sasaki T, Larsson H, Kreuger J, Salmivirta M, Claesson-Welsh L, Lindahl U, Hohenester E, Timpl R. Structural basis and potential role of heparin/heparan sulfate binding to the angiogenesis inhibitor endostatin. *EMBO J.* 1999;18:6240-6248.
- Tiozzo R, Cingi MR, Croce MA. Interaction of heparan sulfate and its fractions with endothelial cells in culture. *Int J Tissue React.* 1993;15:163-168.
- Nissen NN, Shankar R, Gamelli RL, Singh A, DiPietro LA. Heparin and heparan sulphate protect basic fibroblast growth factor from non-enzymic glycosylation. *Biochem J.* 1999;338(Pt 3):637-642.
- Taylor S, Folkman J. Protamine is an inhibitor of angiogenesis. *Nature.* 1982;297:1307-1912.
- Ribatti D, Roncali L, Nico B, Bertossi M. Effects of exogenous heparin on the vasculogenesis of the chorioallantoic membrane. *Acta Anat (Basel).* 1987;130:257-263.
- Pacini S, Gulisano M, Vannucchi S, Ruggiero M. Poly-L-lysine/Heparin Stimulates Angiogenesis in Chick Embryo Chorioallantoic Membrane. *Biochem Biophys Res Commun.* 2002;290:820-823.
- Ribatti D. Chick embryo chorioallantoic membrane as a useful tool to study angiogenesis. *Int Rev Cell Mol Biol.* 2008;270:181-224.
- Niemisto A, Dunmire V, Yli-Harja O, Zhang W, Shmulevich I. Robust quantification of in vitro angiogenesis through image analysis. *IEEE Trans Med Imaging.* 2005;24:549-553.
- Majumder S, Rajaram M, Muley A, Reddy HEPARIN, Tamilarasan KP, Kolluru GK, Sinha S, Siamwala JH, Gupta R, Ilavarasan R, Venkataraman S, Sivakumar KC, Anishetty S, Kumar PG, Chatterjee S. Thalidomide attenuates nitric oxide-driven angiogenesis by interacting with soluble guanylyl cyclase. *Br J Pharmacol.* 2009;158:1720-1734.
- Gopi Krishna K, Sinha S, Majumder S, Ajit M, Siamwala JH, Gupta R, Chatterjee S. Shear stress promotes nitric oxide production in endothelial cells by sub-cellular delocalization of eNOS: A

- basis for shear stress mediated angiogenesis. Nitric Oxide. 2010;22:304-315.
15. Yang EY, Moses HE. Transforming Growth Factor β 1- induced changes in cell Migration, Proliferation, and Angiogenesis in the chicken chorioallantoic membrane. The J Cell Biology. 1990;111:731-741.
 16. Reizis A, Hammel I, Ar A. Regional and developmental variations of blood vessel morphometry in the chick embryo chorioallantoic membrane. J Exp Biol. 2005;208:2483-2488.
 17. Hillen F, Griffioen AW. Tumour vascularization: Sprouting angiogenesis and beyond. Cancer Metastasis Rev. 2007;26:489-502.
 18. Ferrara N, Gerber HP, LeCouter J. The biology of vegf and its receptors. Nat Med. 2003;9:669-676.
 19. Jain RK. Molecular regulation of vessel maturation. Nat Med. 2003;9:685-693.
 20. Dudas J, Ramadori G, Knittel T, Neubauer K, Raddatz D, Egedy K, Kovalszky I. Effect of heparin and liver heparan sulphate on interaction of HepG2-derived transcription factors and their cis-acting elements: altered potential of hepatocellular carcinoma heparan sulphate. Biochem J. 2000;350(Pt 1):245-251.
 21. Parish CR. The role of heparan sulphate in inflammation. Nat Rev Immunol. 2006;6:633-643.
 22. Risau W, Eklom P. Production of a heparin-binding angiogenesis factor by the embryonic kidney. J Cell Biol. 1986;103:1101-1107.
 23. Swinscode JC, Carlson EC. Capillary endothelial cells secrete a heparin-binding mitogen for pericytes. J Cell Science. 1992;103:453-461.
 24. Mi-Sook L, Eun-Joung , Sae-Won L, Myoung Sook K, Kyu-Won K, Yung-Jin K. Angiogenic Activity of Pyruvic Acid in Vivo and in Vitro Angiogenesis Models. Cancer Res. 2001;61:3290-3293.
 25. Ribatti D, Vacca A, Giacchetta F, Cesaretti S, Anichini M, Roncali L, Damacco F. Lipoprotein (a) induces angiogenesis on the chick embryo chorioallantoic membrane. Eur J Clin Invest. 1998;28:533-537.
 26. Ribatti D, Crivellato E, Candussio L, Nico B, Vacca A, Roncali L, Dammacco F. Mast cells and their secretory granules are angiogenic in the chick embryo chorioallantoic membrane. Clin Exp Allergy. 2001;31:602-608.
 27. Rodriguez-Nieto S, Gonzalez-Iriarte M, Carmona R, Munoz-Chapuli R, Medina MA, Quesada AR. Antiangiogenic activity of aeroplysin-1, a brominated compound isolated from a marine sponge. FASEB J. 2002;16:261-263.
 28. Giannopoulou E, Katsoris P, Kardamakis D, Papadimitriou E. Amifostine inhibits angiogenesis in vivo. J Pharmacol Exp Ther. 2003;304:729-737.
 29. Matschke K, Da Silva-Azevedo L, Hlushchuk R, Djonov V, Baum O. Annexins as cell-type-specific markers in the developing chicken chorionallantoic membrane. Cell Tissue Res. 2006;323:395-404.
 30. Balke M, Neumann A, Kersting C, Agelopoulos K, Gebert C, Gosheger G, Buerger H, Hagedorn M: Morphologic characterization of osteosarcoma growth on the chick chorioallantoic membrane. BMC Res Notes. 58-10.1186/1756-0500-3-58. 3
 31. Wiltling J, Christ B, Bokeloh M. A modified chorioallantoic membrane (cam) assay for qualitative and quantitative study of growth factors. Anat Embryol (Berl). 1991;183:259-271.
 32. Schlatter P, Konig MF, Karlsson LM, Burri PH. Quantitative study of intussusceptive capillary growth in the chorioallantoic membrane (cam) of the chicken embryo. Microvasc Res. 1997;54:65-73.
 33. Mark Howarth, Daniel J-F Chinnapen, Kimberly Gerrow, Pieter C Dorrestein, Melanie R Grandy, Neil L Kelleher, Alaa El-Husseini &, Alice Y Ting. A monovalent streptavidin with a single femtomolar biotin binding site. Nature Methods. 2006;3(4):267-273.
 34. Joshua R, Wayment , Joel MH. Biotin-Avidin Binding Kinetics Measured by Single-Molecule Imaging. Anal Chem. 2009;81:336-342.
 35. Zempleni J, Wijeratne SS, Hassan YI. Biotin. Biofactors. 2009;35:36-46.
 36. Fritzsche B. Fast axonal diffusion of 3000 molecular weight dextran amines. J Neurosci Methods. 1993;50:95-103.

Copyright & License

Statement: Copyright © 2012, Rema et al.

Holder: Rema et al

Licensee: Publiverse Online S.R.L.

License: Open Access This article is distributed under the terms of the Creative Commons Attribution 4.0 International License (<http://creativecommons.org/licenses/by/4.0/>), which permits unrestricted use, distribution, and reproduction in any medium, provided you give appropriate credit to the original author(s) and the source, provide a link to the Creative Commons license, and indicate if changes were made. The Creative Commons Public Domain Dedication waiver (<http://creativecommons.org/publicdomain/zero/1.0/>) applies to the data made available in this article, unless otherwise stated.



The present article has been published in Vascular Cell journal by Publiverse Online S.R.L.