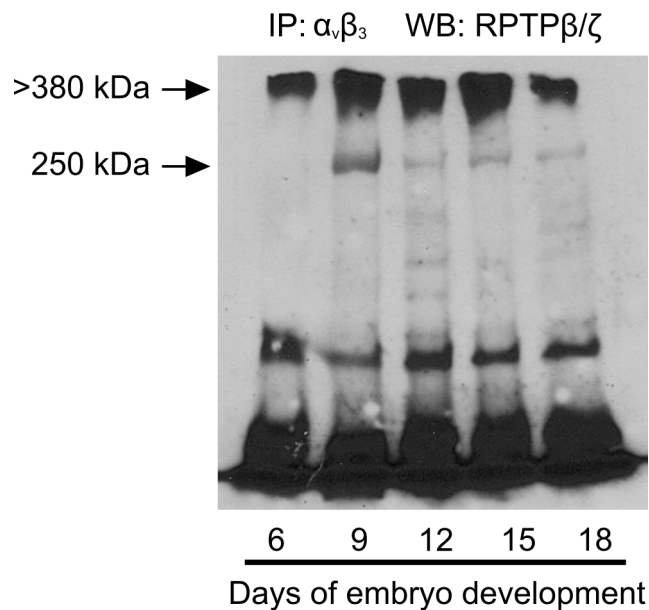


Additional file 1



Co-immunoprecipitation of RPTP β/ζ with $\alpha_v\beta_3$ in the chicken embryo CAM during embryo development. Three mg of total protein from chicken embryo CAM extracts from different developmental stages were subjected to immunoprecipitation for $\alpha_v\beta_3$. Precipitated proteins were analyzed by SDS-PAGE, followed by Western blot analysis for the presence of RPTP β/ζ . Both transmembrane splice variants of RPTP β/ζ (Garwood *et al.*, 2003) have been detected.

Garwood J, Heck N, Reichardt F, Faissner A: **Phosphacan short isoform, a novel non-proteoglycan variant of phosphacan/receptor protein tyrosine phosphatase-beta, interacts with neuronal receptors and promotes neurite outgrowth.** *J Biol Chem* 2003, **278**: 24164–24173.